



EUROPEAN RENAL ASSOCIATION

EUROPEAN DIALYSIS AND TRANSPLANT ASSOCIATION

ERA - EDTA Registry

Annual report 2002



Suggested citation

ERA-EDTA Registry: ERA-EDTA Registry 2002 Annual Report. Academic Medical Center, Amsterdam, The Netherlands, May 2004

ERA - EDTA Registry

Annual report 2002

ERA-EDTA Registry

Dept. of Medical Informatics
Academic Medical Center, J2-254
PO Box 22700
1100 DE Amsterdam
The Netherlands

Telephone +31 20 566 7637

Fax +31 20 691 9840

E-mail erareg@amc.uva.nl

Website www.era-edta-reg.org

ERA-EDTA Registry Committee

F Locatelli, Italy (ERA-EDTA President)

C Zoccali, Italy (Chairman)

C Wanner, Germany (Newsletter Editor)

G Colasanti, Italy

F García López, Spain

AJ van der Heijden, The Netherlands

R Kramar, Austria

T Leivestad, Norway

A MacLeod, Scotland

B Stengel, France

J Tizard, United Kingdom

Registry Office Staff

R Cornet, senior medical informatician

FW Dekker, senior epidemiologist

PCW van Dijk, medical informatician

EF Guggenheim-van der Hout, secretary

KJ Jager, managing director - epidemiologist

VS Stel, epidemiologist

STD de Vos, database manager - software engineer

Acknowledgements

The ERA-EDTA Registry would like to thank the patients and staff of all the dialysis and transplant units who have contributed data via their national and regional renal registries. In addition, we would like to thank the following persons for their contribution to the work of the ERA-EDTA Registry.

Registry

For contribution to Section A

Austria	R Kramar and HK Stummvoll
Belgium - Dutch-speaking	H Augustijn, JM Billiouw and M De Broe
Belgium - French-speaking	F Collart
Denmark	H Løkkegaard
Finland	C Grönhagen-Riska and P Finne
Greece	GA Ioannidis
Iceland	P Ásmundsson
Norway	T Leivestad
Spain - Basque country	Á Magaz, J Aranzabal and I Lampreabe
Spain - Catalonia	M Clèries and E Vela
Spain - Valencia	O Zurriaga and MJ García Blasco
Sweden	S Schön
The Netherlands	F de Charro
United Kingdom - England/Wales	D Ansell and T Feest
United Kingdom - Scotland	K Simpson

For contribution to Section B

Bosnia - Herzegovina	H Resić and E Mešić
Croatia	S Čala
Czech Republic	F Lopot and E Pokorná
Estonia	M Ots, M Luman and K Lilienthal
France - Limousin	JC Aldigier, F Glaudet and A Vergnenègre
France - Lorraine	M Kessler and C Loos
Germany	HJ Schober-Halstenberg and K Haas
Latvia	H Cernevskis
Macedonia	O Stojoeva, R Grozdanovski and K Zafirovska
Poland	B Rutkowski
Portugal	J Pinto dos Santos
Russia	N Tomilina and B Bikbov
Serbia and Montenegro	M Radovic
Slovak Republic	V Spustowa, D Devecka and J Boldizsar
Tunisia	N Cherni and H Trimech
Turkey	K Serdengeçti and G Süleymanlar

The ERA-EDTA Registry is funded by the ERA-EDTA. The following companies have committed funds in the form of unrestricted educational grants to assist the ERA-EDTA in the financial support of the Registry: Amgen, Baxter, Fresenius Medical Care, Gambro, Hoffman-La Roche, Hospal, Ortho-Biothech and Shire.

Table of Contents

I Introduction	11
II Methods	12
III Reference Tables - SECTION A	17
A1 AFFILIATED REGISTRY INFORMATION FOR 2002	
Table A.1.1	18
General population of the country/region and percent coverage of general population in 2002	
Table A.1.2	19
Renal centres: total number of centres and number collaborating	
A2 INCIDENT PATIENTS ACCEPTED FOR RRT IN 2002 (residents only) AT DAY 1	
Table A.2.1	20
Incident counts and percentage <i>at day 1, by age and gender</i>	
Table A.2.2	21
Gender, mean and median age of incident patients <i>at day 1</i>	
Table A.2.3	22
Incident rates per million population, unadjusted <i>at day 1, by age and gender</i>	
Table A.2.4	23
Incident rates per million population, unadjusted <i>at day 1, by cause of renal failure</i>	
Table A.2.5	24
Incident rates per million population, adjusted <i>at day 1, by cause of renal failure, adjusted for age and gender</i>	
A3 INCIDENT PATIENTS ACCEPTED FOR RRT IN 2002 (residents only) AT DAY 90	
Table A.3.1	25
Incident counts and percentage <i>at day 90, by age and gender</i>	
Table A.3.2	26
Gender, mean and median age of incident patients <i>at day 90</i>	
Table A.3.3	27
Incident rates per million population, unadjusted <i>at day 90, by age and gender</i>	
Table A.3.4	28
Incident rates per million population, unadjusted <i>at day 90, by cause of renal failure</i>	
Table A.3.5	29
Incident rates per million population, adjusted <i>at day 90, by cause of renal failure, adjusted for age and gender</i>	
Table A.3.6	30
Incident counts <i>at day 90, by established therapy</i>	
Table A.3.7	31
Incident rates per million population, unadjusted <i>at day 90, by established therapy</i>	
Table A.3.8	32
Incident rates per million population, adjusted <i>at day 90, by established therapy, adjusted for age and gender</i>	

Table A.3.9	33
Percentage of established therapy, unadjusted <i>at day 90</i>	
Table A.3.10	34
Percentage of established therapy, unadjusted <i>at day 90, by age, gender and primary diagnosis</i>	

A4 PREVALENT PATIENTS ON RRT IN 2002 (residents only)

Table A.4.1	35
Prevalence counts and percentage <i>prevalent patients on December 31, by age and gender</i>	
Table A.4.2	36
Gender, mean and median age <i>prevalent patients on December 31</i>	
Table A.4.3	37
Prevalence per million population, unadjusted <i>prevalent patients on December 31, by age and gender</i>	
Table A.4.4	38
Prevalence per million population and percentage, unadjusted <i>prevalent patients on December 31, by cause of renal failure</i>	
Table A.4.5	39
Prevalence per million population, adjusted <i>prevalent patients on December 31, by cause of renal failure, adjusted for age and gender</i>	
Table A.4.6	40
Prevalence counts <i>prevalent patients on December 31, by established therapy</i>	
Table A.4.7	41
Prevalence per million population, unadjusted <i>prevalent patients on December 31, by established therapy</i>	
Table A.4.8	42
Prevalence per million population, adjusted <i>prevalent patients on December 31, by established therapy, adjusted for age and gender</i>	
Table A.4.9	43
Percentage of established therapy, unadjusted <i>prevalent patients on December 31</i>	
Table A.4.10	44
Percentage of established therapy, unadjusted <i>prevalent patients on December 31, by age, gender and primary diagnosis</i>	
Table A.4.11	45
Renal transplants performed in 2002, number and percentage <i>by donor type</i>	

A5 SURVIVAL PROBABILITY (residents only)

Patient Survival on Renal Replacement Therapy (RRT)

Table A.5.1	46
90-day, one-, two- and five-year survival probabilities (cohort 1993-1997): Incident RRT patients, unadjusted <i>from day 1 to 90 days, one, two and five years, by age, gender and primary diagnosis</i>	
Table A.5.2	47
90-day, one-, two- and five-year survival probabilities (cohort 1993-1997): Incident RRT patients, adjusted <i>from day 1 to 90 days, one, two and five years, adjusted for age, gender and primary diagnosis</i>	
Table A.5.3	48
One-, two- and five-year survival probabilities (cohort 1993-1997): Incident RRT patients, unadjusted <i>from day 91 to one, two and five years + 90 days, by age, gender and primary diagnosis</i>	
Table A.5.4	49
One-, two- and five-year survival probabilities (cohort 1993-1997): Incident RRT patients, adjusted <i>from day 91 to one, two and five years + 90 days, adjusted for age, gender and primary diagnosis</i>	
Table A.5.5	50
90-day, one- and two-year survival probabilities (cohort 1996-2000): Incident RRT patients, unadjusted <i>from day 1 to 90 days, one and two years, by age, gender and primary diagnosis</i>	
Table A.5.6	51
90-day, one- and two-year survival probabilities (cohort 1996-2000): Incident RRT patients, adjusted <i>from day 1 to 90 days, one and two years, adjusted for age, gender and primary diagnosis</i>	
Table A.5.7	52
One- and two-year survival probabilities (cohort 1996-2000): Incident RRT patients, unadjusted <i>from day 91 to one and two years + 90 days, by age, gender and primary diagnosis</i>	
Table A.5.8	53
One- and two-year survival probabilities (cohort 1996-2000): Incident RRT patients, adjusted <i>from day 91 to one and two years + 90 days, adjusted for age, gender and primary diagnosis</i>	

Patient Survival on Dialysis

Table A.5.9	54
90-day, one-, two- and five-year survival probabilities (cohort 1993-1997): Incident dialysis patients, unadjusted <i>from day 1 to 90 days, one, two and five years, by age, gender and primary diagnosis</i>	
Table A.5.10	55
90-day, one-, two- and five-year survival probabilities (cohort 1993-1997): Incident dialysis patients, adjusted <i>from day 1 to 90 days, one, two and five years, adjusted for age, gender and primary diagnosis</i>	
Table A.5.11	56
One-, two- and five-year survival probabilities (cohort 1993-1997): Incident dialysis patients, unadjusted <i>from day 91 to one, two and five years + 90 days, by age, gender and primary diagnosis</i>	
Table A.5.12	57
One-, two- and five-year survival probabilities (cohort 1993-1997): Incident dialysis patients, adjusted <i>from day 91 to one, two and five years + 90 days, adjusted for age, gender and primary diagnosis</i>	
Table A.5.13	58
90-day, one- and two-year survival probabilities (cohort 1996-2000): Incident dialysis patients, unadjusted <i>from day 1 to 90 days, one and two years, by age, gender and primary diagnosis</i>	
Table A.5.14	59
90-day, one- and two-year survival probabilities (cohort 1996-2000): Incident dialysis patients, adjusted <i>from day 1 to 90 days, one and two years, adjusted for age, gender and primary diagnosis</i>	
Table A.5.15	60
One- and two-year survival probabilities (cohort 1996-2000): Incident dialysis patients, unadjusted <i>from day 91 to one and two years + 90 days, by age, gender and primary diagnosis</i>	
Table A.5.16	61
One- and two-year survival probabilities (cohort 1996-2000): Incident dialysis patients, adjusted <i>from day 91 to one and two years + 90 days, adjusted for age, gender and primary diagnosis</i>	

Patient Survival after First Transplant (cadaver donor)

Table A.5.17	62
One-, two- and five-year survival probabilities (cohort 1993-1997): First transplant patients (cadaver donor), unadjusted <i>from day of transplant to one, two and five years, by age, gender and primary diagnosis</i>	
Table A.5.18	63
One-, two- and five-year survival probabilities (cohort 1993-1997): First transplant patients (cadaver donor), adjusted <i>from day of transplant to one, two and five years, adjusted for age, gender and primary diagnosis</i>	
Table A.5.19	64
One- and two-year survival probabilities (cohort 1996-2000): First transplant patients (cadaver donor), unadjusted <i>from day of transplant to one and two years, by age, gender and primary diagnosis</i>	
Table A.5.20	65
One- and two-year survival probabilities (cohort 1996-2000): First transplant patients (cadaver donor), adjusted <i>from day of transplant to one and two years, adjusted for age, gender and primary diagnosis</i>	

Patient Survival after First Transplant (living donor)

Table A.5.21	66
One-, two- and five-year survival probabilities (cohort 1993-1997): First transplant patients (living donor), unadjusted <i>from day of transplant to one, two and five years, by age, gender and primary diagnosis</i>	
Table A.5.22	67
One-, two- and five-year survival probabilities (cohort 1993-1997): First transplant patients (living donor), adjusted <i>from day of transplant to one, two and five years, adjusted for age, gender and primary diagnosis</i>	
Table A.5.23	68
One- and two-year survival probabilities (cohort 1996-2000): First transplant patients (living donor), unadjusted <i>from day of transplant to one and two years, by age, gender and primary diagnosis</i>	
Table A.5.24	69
One- and two-year survival probabilities (cohort 1996-2000): First transplant patients (living donor), adjusted <i>from day of transplant to one and two years, adjusted for age, gender and primary diagnosis</i>	

Graft Survival after First Transplant (cadaver donor)

Table A.5.25	70
One-, two- and five-year survival probabilities (cohort 1993-1997): First graft (cadaver donor), unadjusted <i>from day of transplant to one, two and five years, by age, gender and primary diagnosis</i>	
Table A.5.26	71
One-, two- and five-year survival probabilities (cohort 1993-1997): First graft (cadaver donor), adjusted <i>from day of transplant to one, two and five years, adjusted for age, gender and primary diagnosis</i>	
Table A.5.27	72
One- and two-year survival probabilities (cohort 1996-2000): First graft (cadaver donor), unadjusted <i>from day of transplant to one and two years, by age, gender and primary diagnosis</i>	
Table A.5.28	73
One- and two-year survival probabilities (cohort 1996-2000): First graft (cadaver donor), adjusted <i>from day of transplant to one and two years, adjusted for age, gender and primary diagnosis</i>	

Graft Survival after First Transplant (living donor)	
Table A.5.29	74
One-, two- and five-year survival probabilities (cohort 1993-1997): First graft (living donor), unadjusted <i>from day of transplant to one, two and five years, by age, gender and primary diagnosis</i>	
Table A.5.30	75
One-, two- and five-year survival probabilities (cohort 1993-1997): First graft (living donor), adjusted <i>from day of transplant to one, two and five years, adjusted for age, gender and primary diagnosis</i>	
Table A.5.31	76
One- and two-year survival probabilities (cohort 1996-2000): First graft (living donor), unadjusted <i>from day of transplant to one and two years, by age, gender and primary diagnosis</i>	
Table A.5.32	77
One- and two-year survival probabilities (cohort 1996-2000): First graft (living donor), adjusted <i>from day of transplant to one and two years, adjusted for age, gender and primary diagnosis</i>	
Patient Survival by Modality and Primary Diagnosis	
Figure A.5.1	78
Adjusted survival (cohort 1993-1997): Incident dialysis patients and patients receiving a first transplant in the calendar year <i>from day 91, by modality, adjusted for age, gender and primary diagnosis</i>	
Figure A.5.2	78
Adjusted survival (cohort 1993-1997): Incident haemodialysis patients <i>from day 91, by primary diagnosis, adjusted for age and gender</i>	
Figure A.5.3	78
Adjusted survival (cohort 1993-1997): Incident peritoneal dialysis patients <i>from day 91, by primary diagnosis, adjusted for age and gender</i>	
A6 EXPECTED REMAINING LIFETIME	
Table A.6.1	79
Expected remaining lifetimes (years) of the general population in 2000 in the participating European countries, & of prevalent dialysis and transplant patients in 2001 and 2002 (includes mortality in the first 90 days) <i>by age and gender</i>	
IV Reference Tables - SECTION B	
	81
B1 AFFILIATED REGISTRY INFORMATION FOR 2002	
Table B.1.1	82
General population of the country/region and percent coverage of general population in 2002	
Table B.1.2	83
Renal centres: total number of centres and number collaborating	
B2 INCIDENT PATIENTS ACCEPTED FOR RRT IN 2002 (residents only) AT DAY 1	
Table B.2.1	84
Incident counts and incident rates per million population, unadjusted <i>at day 1</i>	
Table B.2.2	85
Gender, mean and median age of incident patients <i>at day 1</i>	
Table B.2.3	86
Incident rates per million population, adjusted <i>at day 1, adjusted for age and gender</i>	
Table B.2.4	87
Incident rates per million population and percentage, unadjusted <i>at day 1, by cause of renal failure</i>	
B3 INCIDENT PATIENTS ACCEPTED FOR RRT IN 2002 (residents only) AT DAY 90	
Table B.3.1	88
Incident counts and incident rates per million population, unadjusted <i>at day 90</i>	
Table B.3.2	89
Gender, mean and median age of incident patients <i>at day 90</i>	
Table B.3.3	90
Incident rates per million population, adjusted <i>at day 90, adjusted for age and gender</i>	
Table B.3.4	91
Incident rates per million population and percentage, unadjusted <i>at day 90, by cause of renal failure</i>	

Table B.3.5	92
Incident counts	
<i>at day 90, by established therapy</i>	
Table B.3.6	93
Incident rates per million population, unadjusted	
<i>at day 90, by established therapy</i>	
Table B.3.7	94
Percentage of established therapy, unadjusted	
<i>at day 90</i>	

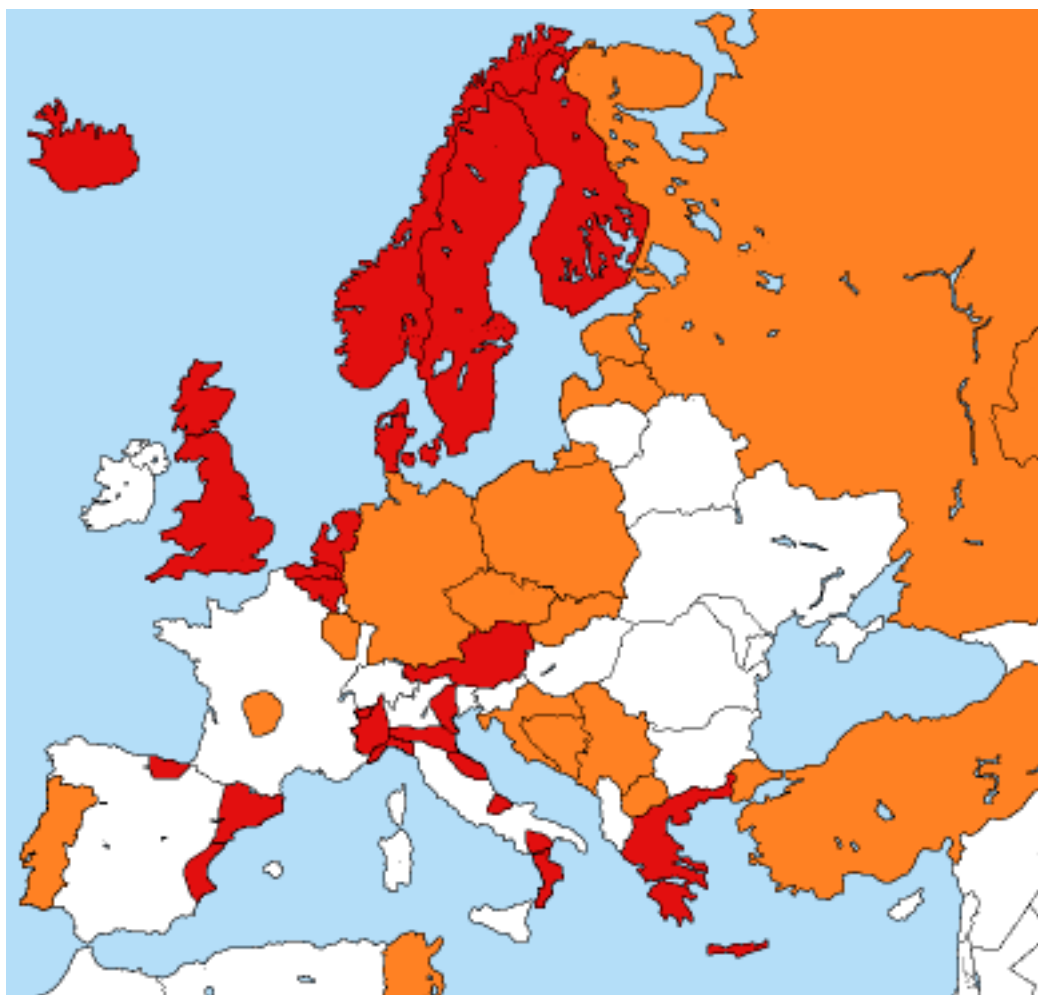
B4 PREVALENT PATIENTS ON RRT IN 2002 (residents only)

Table B.4.1	95
Prevalent counts and per million population, unadjusted	
<i>prevalent patients on December 31</i>	
Table B.4.2	96
Gender, mean and median age	
<i>prevalent patients on December 31</i>	
Table B.4.3	97
Prevalence per million population, adjusted	
<i>prevalent patients on December 31, adjusted for age and gender</i>	
Table B.4.4	98
Prevalence per million population and percentage, unadjusted	
<i>prevalent patients on December 31, by cause of renal failure</i>	
Table B.4.5	99
Prevalence counts	
<i>prevalent patients on December 31, by established therapy</i>	
Table B.4.6	100
Prevalence per million population, unadjusted	
<i>prevalent patients on December 31, by established therapy</i>	
Table B.4.7	101
Percentage of established therapy, unadjusted	
<i>prevalent patients on December 31</i>	
Table B.4.8	102
Renal transplants performed in 2002, number and percentage	
<i>by donor type</i>	

I Introduction

This 2002 annual report includes information on 31 registries. Section A contains data on incidence, prevalence and survival as well as data on expected remaining life times from those 15 national and regional registries whose individual patient data are included in the ERA-EDTA Registry database (shown in red).

Section B relates to the 16 countries and regions collecting individual patient data, centre questionnaire data or information from health authorities (shown in orange). Their data are not included in the ERA-EDTA Registry database. These registries complete the tables themselves and return them to the ERA-EDTA Registry office for inclusion in this annual report.



II Methods

Section A

The tables in this section are based on the analyses of data sets received from national and regional registries collecting individual patient data, which are included in the ERA-EDTA Registry database. It was not possible for French-speaking Belgium to participate in this report with 2002 data as they had technical problems at the start of a new web-based computer system.

The databases serving as a basis for the analyses were received on the dates shown in the following table.

Registry	Date
Austria	30 October 2003
Belgium - Dutch-speaking	6 November 2003
Belgium - French-speaking	28 April 2003
Denmark	15 May 2003
Finland	8 January 2004
Greece	17 February 2004
Iceland	11 November 2003
Norway	10 November 2003
Spain - Basque country	21 July 2003
Spain - Catalonia	3 November 2003
Spain - Valencia	10 November 2003
Sweden	19 March 2004
The Netherlands	10 March 2004
United Kingdom - England/Wales	2 February 2004
United Kingdom - Scotland	5 November 2003

Registry data are subject to continuous alteration and improvement. Small differences between ERA-EDTA Registry data and the data presented in the national/regional registry's own annual reports may therefore result from different times of data extraction.

Differences in data collection between collaborating registries and inclusion of their data into the ERA-EDTA Registry database

In the comparison of data between registries it should be recognised that there may be small differences between registries in definitions and in the collection of their data. The different registries do not for example collect data at the same level of detail, especially with regard to the different subtypes of the treatment modalities. Also, registries may handle temporary changes in the treatment modality of the individual patient differently.

The data from England/Wales (United Kingdom) exclude patients younger than 18 years of age in the data sets provided to the ERA-EDTA Registry. Inclusion of those would add 2 pmp to the overall UK incidence rate and 12 pmp to the UK prevalence. In addition, it should be noted that the prevalence figures produced by the UK Renal Registry are slightly higher than those produced by the ERA-EDTA Registry. This is due to the fact that the UK Renal Registry calculates prevalence rates from the electronic quarterly data returns (which are not part of the ERA-EDTA Registry data set) rather than from the timeline which can be incomplete for some patients.

Incidence and prevalence

The incidence tables refer to all patients who started RRT for ESRD in 2002 and the prevalence tables to all patients who were alive and on RRT on 31 December 2002. General population data for the year 2002, provided by Eurostat, the national bureaus of statistics or the national or regional registry, served as the population base. The grouping of renal diseases is provided in Appendix 1.

For the adjustment of incidence and prevalence for age and gender we used the age and gender distribution of the European population of 1995 as provided by Eurostat.

Survival analysis

For the analysis of survival data we used two five-year cohorts:

- 1993-1997 - for the presentation of 90-day (for survival on RRT and on dialysis), one-, two- and five-year survival probabilities. These analyses were based on data from Austria, Belgium (Dutch-speaking), Belgium (French-speaking), Denmark, Finland, Greece, Iceland, Norway, Spain (Basque Country), Spain (Catalonia), Spain (Valencia), Sweden, The Netherlands and United Kingdom (Scotland).
- 1996-2000 - for the presentation of 90-day (for survival on RRT and on dialysis), one- and two-year survival probabilities. These analyses were based on data from Austria, Belgium (Dutch-speaking), Belgium (French-speaking), Denmark, Finland, Greece, Iceland, Norway, Spain (Basque Country), Spain (Catalonia), Spain (Valencia), Sweden, The Netherlands, United Kingdom (England/Wales) and United Kingdom (Scotland).

With regard to the inclusion of data, some further comments need to be made. The data were used from the date from which they were available, which in a small number of cases was later than the first cohort year, this being due to the fact that the national or regional registry was established later. Survival was analysed from day 1 and from day 91 onwards for those patients alive and on RRT on those days. All patients had the opportunity to complete the entire follow-up period with the exception of patients starting in the last 90 days of a cohort in a survival analysis from day 91.

For the different types of survival analysis we defined the following events and censoring.

<i>Survival type</i>	<i>Event</i>	<i>Censoring</i>
Patients on renal replacement therapy	Death of patient	Recovery of renal function Loss to follow-up End of follow-up time
Patients on dialysis	Death of patient	Transplantation Recovery of renal function Loss to follow-up End of follow-up time
First transplant recipients	Death of patient	Loss to follow-up End of follow-up time
First graft	Death of patient Graft failure	Loss to follow-up End of follow-up time

Survival is presented in tables and figures. As the ERA-EDTA Registry database is still growing with respect to the coverage of European countries, we chose to adjust for fixed values for a number of parameters in our survival analyses. The values used for the survival tables are shown in the following table.

<i>Survival type</i>	<i>Age</i>	<i>Gender</i>	<i>Renal disease</i>
Patients on renal replacement therapy	60 years	60% male	20% diabetes mellitus 17% hypertension/rvd* 15% glomerulonephritis 48% other cause
Patients on dialysis	60 years	60% male	20% diabetes mellitus 17% hypertension/rvd 15% glomerulonephritis 48% other cause
First transplant recipients (cadaver donor)	45 years	60% male	10% diabetes mellitus 8% hypertension/rvd 28% glomerulonephritis 54% other cause
First transplant recipients (living donor)	45 years	60% male	10% diabetes mellitus 8% hypertension/rvd 28% glomerulonephritis 54% other cause
First graft (cadaver donor)	45 years	60% male	10% diabetes mellitus 8% hypertension/rvd 28% glomerulonephritis 54% other cause
First graft (living donor)	45 years	60% male	10% diabetes mellitus 8% hypertension/rvd 28% glomerulonephritis 54% other cause

* rvd: renal vascular disease

In the Figures A.5.1 to A.5.3 survival was adjusted for age 60 years and gender 60% male. In addition, Figure A.5.1 was adjusted for renal disease distribution: 20% diabetes mellitus; 17% hypertension/rvd; 15% glomerulonephritis and 48% other cause.

For the calculation of expected remaining lifetimes of the patients and the general population we used the same methodology as the USRDS (USRDS 2003 Annual Report). For Europe, the mortality data of the general population of the contributing countries were provided by Eurostat. The size of the contribution of each country to the general population that was used to calculate expected remaining lifetimes was in proportion to the size of the general population covered by its registry.

In unadjusted survival analysis the cells in the tables were left blank when there were less than 30 patients in that cell. In the adjusted survival analysis, cells with less than 30 events were left empty. The latter analysis excluded patients for whom age, gender, or primary renal disease was missing.

Section B

These tables relate to countries collecting individual patient data, centre questionnaire data or information from health authorities. As their data are not included in the ERA-EDTA Registry database, the tables were completed by national and regional registries themselves and sent to the ERA-EDTA Registry for inclusion in this annual report.

The incidence tables refer to all patients who started RRT for ESRD in 2002 and the prevalence tables to all patients who were alive and on RRT on 31 December 2002. General population data for the year 2002 were provided by the national or regional registries. For the adjustment of incidence and prevalence for age and gender they used the age and gender distribution of the European population of 1995.

Appendix 1 - Grouping of renal diseases

Primary Renal Disease (PRD)	1994 code	1995 code	PRD Group
Glomerulonephritis; histologically NOT examined	10	10	I
Focal segmental glomerulosclerosis with nephrotic syndrome in children	11	11	I
IgA nephropathy (proven by immunofluorescence, not code 76 and not 85)	12	12	I
Dense deposit disease; membrano-proliferative GN; type II (proven by immunofluorescence and/or electron microscopy)	13	13	I
Membranous nephropathy	14	14	I
Membrano-proliferative GN; type I (proven by immunofluorescence and/or electron microscopy - not code 84 or 89)	15	15	I
Crescentic (extracapillary) glomerulonephritis (type I, II, III)	16	16	I
Focal segmental glomerulosclerosis with nephrotic syndrome in adults	17	17	I
Glomerulonephritis; histologically examined, not given above	19	19	I
Pyelonephritis – cause not specified	20	20	II
Pyelonephritis associated with neurogenic bladder	21	21	II
Pyelonephritis due to congenital obstructive uropathy with/without vesico-ureteric reflux	22	22	II
Pyelonephritis due to acquired obstructive uropathy	23	23	II
Pyelonephritis due to vesico-ureteric reflux without obstruction	24	24	II
Pyelonephritis due to urolithiasis	25	25	II
Pyelonephritis due to other cause	29	29	II
Interstitial nephritis (not pyelonephritis) due to other cause, or unspecified (not mentioned above)	30	30	VII
Nephropathy (interstitial) due to analgesic drugs	31	31	VII
Nephropathy (interstitial) due to cis-platinum	32	32	VII
Nephropathy (interstitial) due to cyclosporin A	33	33	VII
Lead induced nephropathy (interstitial)		34	VII
Drug induced nephropathy (interstitial) not mentioned above	39	39	VII
Cystic kidney disease - type unspecified	40	40	VII
Polycystic kidneys; adult type (dominant)	41	41	III
Polycystic kidneys; infantile (recessive)	42	42	VII
Medullary cystic disease; including nephronophthisis	43	43	VII
Cystic kidney disease - other specified type	49	49	VII
Hereditary/Familial nephropathy - type unspecified	50	50	VII
Hereditary nephritis with nerve deafness (Alport's Syndrome)	51	51	VII
Cystinosis	52	52	VII
Primary oxalosis	53	53	VII
Fabry's disease	54	54	VII
Hereditary nephropathy - other specified type	59	59	VII
Renal hypoplasia (congenital) - type unspecified	60	60	VII
Oligomeganephronic hypoplasia	61	61	VII
Congenital renal dysplasia with or without urinary tract malformation	63	63	VII
Syndrome of agenesis of abdominal muscles (Prune Belly)	66	66	VII
Renal vascular disease - type unspecified	70	70	V
Renal vascular disease due to malignant hypertension	71	71	IV
Renal vascular disease due to hypertension	72	72	IV
Renal vascular disease due to polyarteritis	73	73	VII
Wegener's granulomatosis	74	74	VII
Glomerulonephritis related to liver cirrhosis	76	76	VII
Cryoglobulinaemic glomerulonephritis		78	VII
Renal vascular disease - due to other cause (not given above and not code 84-88)	79	79	V
Diabetes glomerulosclerosis or diabetic nephropathy - Type I	80	80	VI
Diabetes glomerulosclerosis or diabetic nephropathy - Type II	81	80	VI
Myelomatosis/light chain deposit disease	82	82	VII
Amyloid	83	83	VII
Lupus erythematosus	84	84	VII
Henoch-Schoenlein purpura	85	85	VII
Goodpasture's Syndrome	86	86	VII
Systemic sclerosis (scleroderma)	87	87	VII
Haemolytic Uraemic Syndrome (including Moschowitz Syndrome)	88	88	VII
Multi-system disease - other (not mentioned above)	89	89	VII
Tubular necrosis (irreversible) or cortical necrosis (different from 88)	90	90	VII
Tuberculosis	91	91	VII
Gout	92	92	VII
Nephrocalcinosis and hypercalcaemic nephropathy	93	93	VII
Balkan nephropathy	94	94	VII
Kidney tumour	95	95	VII
Traumatic or surgical loss of kidney	96	96	VII
Other identified renal disorders	99	99	VII
Chronic renal failure; aetiology uncertain	00	00	VIII

I Glomerulonephritis/sclerosis; II Pyelonephritis; III Polycystic kidneys, adult type; IV Hypertension; V Renal vascular disease; VI Diabetes mellitus; VII Miscellaneous; VIII Unknown

III Reference Tables - SECTION A

Table A.1.1
General population of the country/region and percent coverage of general population in 2002

	General population in thousands	% Coverage of general population by the registry
Austria	8,064	100
Belgium, Dutch-speaking	5,984	100
Denmark	5,374	100
Finland	5,194	100
Greece	11,003	100
Iceland	287	100
Norway	4,538	100
Spain, Basque country	2,070	100
Spain, Catalonia	6,506	100
Spain, Valencia	4,139	100
Sweden	8,924	100
The Netherlands	16,148	100
UK, England/Wales	52,455	72
UK, Scotland	5,054	100

Table A.1.2
Renal centres: total number of centres and number collaborating

	Total number of renal centres	Number of renal centres collaborating with the registry
Austria	60	60
Belgium, Dutch-speaking	27	27
Denmark	15	15
Finland	28	28
Greece	119	119
Iceland	1	1
Norway	20	20
Spain, Basque country	11	11
Spain, Catalonia	44	44
Spain, Valencia	45	45
Sweden	65	65
The Netherlands	51	51
UK, England/Wales	57	40
UK, Scotland	11	11

A2 INCIDENT PATIENTS ACCEPTED FOR RRT IN 2002 (residents only) AT DAY 1

Table A.2.1
Incident counts and percentage
at day 1, by age and gender

	All		0-19						20-44						45-64						65-74						75+									
			All		Men		Women		All		Men		Women		All		Men		Women		All		Men		Women											
	N	%	N	%	N	%	N	%	N	%	N	%	N	%	N	%	N	%	N	%	N	%	N	%	N	%	N	%	N	%						
Austria	1060	100	642	100	418	100	17	2	10	2	7	2	133	13	92	14	41	10	391	37	267	42	124	30	281	27	149	23	132	32	238	22	124	19	114	27
Belgium, Dutch-speaking	1016	100	573	100	443	100	6	1	3	1	3	1	81	8	47	8	34	8	262	26	164	29	98	22	321	32	185	32	136	31	346	34	174	30	172	39
Denmark	692	100	428	100	264	100	10	1	4	1	6	2	87	13	47	11	40	15	235	34	140	33	95	36	204	29	130	30	74	28	156	23	107	25	49	19
Finland	476	100	304	100	172	100	10	2	6	2	4	2	80	17	50	16	30	17	217	46	149	49	68	40	113	24	70	23	43	25	56	12	29	10	27	16
Greece	1820	100	1122	100	698	100	16	1	7	1	9	1	171	9	112	10	59	8	448	25	294	26	154	22	659	36	401	36	258	37	450	25	265	24	185	27
Iceland	22	100	8	100	14	100	1	5	1	13	0	0	4	18	1	13	3	21	3	14	1	13	2	14	8	36	3	38	5	36	6	27	2	25	4	29
Norway	420	100	286	100	134	100	16	4	9	3	7	5	63	15	39	14	24	18	138	33	92	32	46	34	106	25	73	26	33	25	97	23	73	26	24	18
Spain, Basque country	204	100	140	100	64	100	8	4	4	3	4	6	19	9	11	8	8	13	62	30	44	31	18	28	61	30	46	33	15	23	41	20	25	18	16	25
Spain, Catalonia	955	100	602	100	353	100	6	1	5	1	1	0	117	12	81	13	36	10	271	28	171	28	100	28	301	32	196	33	105	30	260	27	149	25	111	31
Spain, Valencia	643	100	390	100	253	100	9	1	6	2	3	1	78	12	51	13	27	11	184	29	121	31	63	25	191	30	119	31	72	28	179	28	92	24	87	34
Sweden	1117	100	730	100	387	100	10	1	6	1	4	1	134	12	91	12	43	11	385	34	245	34	140	36	255	23	164	22	91	24	333	30	224	31	109	28
The Netherlands	1619	100	945	100	674	100	40	2	19	2	21	3	247	15	130	14	117	17	543	34	318	34	225	33	452	28	278	29	174	26	337	21	200	21	137	20
UK, England/Wales	3603	100	2205	100	1398	100	18	0	9	0	9	1	637	18	381	17	256	18	1130	31	672	30	458	33	986	27	614	28	372	27	832	23	529	24	303	22
UK, Scotland	548	100	312	100	236	100	6	1	5	2	1	0	88	16	54	17	34	14	177	32	103	33	74	31	144	26	81	26	63	27	133	24	69	22	64	27

*Percentages are row percentages
Categories may not add up to total or to 100% because of missing values*

A2 INCIDENT PATIENTS ACCEPTED FOR RRT IN 2002 (residents only) AT DAY 1

Table A.2.2
Gender, mean and median age of incident patients
at day 1

	All				Men				Women			
	%	Mean (years)	SD	Median (years)	%	Mean (years)	SD	Median (years)	%	Mean (years)	SD	Median (years)
Austria	100	62.1	15.9	64.4	60.6	60.6	15.8	62.4	39.4	64.5	15.7	69.1
Belgium, Dutch-speaking	100	67.2	14.3	70.6	56.4	66.3	14.2	68.9	43.6	68.5	14.5	72.0
Denmark	100	62.7	15.3	65.8	61.8	64.1	14.6	66.6	38.2	60.5	16.1	64.0
Finland	100	57.6	15.7	58.3	63.9	57.1	15.1	57.7	36.1	58.4	16.6	59.4
Greece	100	65.4	14.8	68.9	61.6	65.2	14.7	68.4	38.4	65.7	15.0	69.5
Iceland	100	60.0	21.9	70.8	36.4	55.6	26.4	68.6	63.6	62.6	19.5	71.4
Norway	100	60.3	17.8	64.5	68.1	61.4	17.2	65.5	31.9	57.8	18.8	60.6
Spain, Basque country	100	61.6	17.1	66.1	68.6	62.4	15.5	66.6	31.4	60.0	20.1	65.0
Spain, Catalonia	100	64.1	15.6	68.4	63.0	63.1	15.9	67.7	37.0	65.8	14.9	69.0
Spain, Valencia	100	63.6	16.0	67.6	60.7	62.3	16.2	66.1	39.3	65.7	15.7	69.5
Sweden	100	63.6	15.6	66.7	65.4	63.7	15.9	66.8	34.6	63.6	15.1	66.4
The Netherlands	100	60.7	16.8	64.4	58.4	61.5	16.3	65.1	41.6	59.6	17.5	63.0
UK, England/Wales	100	61.7	16.1	65.3	61.2	62.2	16.1	65.7	38.8	61.0	16.1	64.3
UK, Scotland	100	61.8	16.3	65.3	56.9	60.7	16.7	64.0	43.1	63.2	15.6	67.1

A2 INCIDENT PATIENTS ACCEPTED FOR RRT IN 2002 (residents only) AT DAY 1

Table A.2.3
Incident rates per million population, unadjusted
at day 1, by age and gender

	All			0-19			20-44			45-64			65-74			75+		
	All	Men	Women	All	Men	Women	All	Men	Women	All	Men	Women	All	Men	Women	All	Men	Women
	Pmp	Pmp	Pmp	Pmp	Pmp	Pmp	Pmp	Pmp	Pmp	Pmp	Pmp	Pmp	Pmp	Pmp	Pmp	Pmp	Pmp	Pmp
Austria	131.4	163.9	100.8	9.4	10.8	7.9	44.3	60.6	27.7	197.3	272.6	123.8	415.7	491.2	354.3	399.8	663.3	279.1
Belgium, Dutch-speaking	169.8	194.2	146.0	4.4	4.4	4.6	38.4	43.9	32.8	175.3	217.9	132.1	549.4	681.1	435.0	771.8	1042.8	611.2
Denmark	128.7	161.1	97.2	7.7	6.0	9.5	46.3	49.3	43.2	167.2	198.4	135.8	488.7	665.4	333.2	410.4	760.9	204.6
Finland	91.6	119.8	64.7	7.9	9.3	6.5	46.3	56.8	35.4	152.9	210.6	95.5	258.2	360.2	176.7	160.1	261.0	113.2
Greece	165.4	205.9	125.7	6.9	5.8	8.0	40.8	52.4	28.8	172.1	233.0	114.8	540.1	711.6	393.0	676.6	942.0	482.0
Iceland	76.5	55.6	97.5	11.5	22.6	0	37.6	18.6	56.9	49.4	32.5	66.9	436.0	342.2	521.9	394.4	315.6	450.6
Norway	92.5	126.0	59.1	13.6	15.3	11.9	39.4	48.8	30.0	127.1	169.4	84.7	328.5	451.8	204.8	275.6	414.2	136.5
Spain, Basque country	98.5	138.7	60.3	22.7	22.1	23.3	23.1	26.5	19.7	118.5	171.4	67.6	281.6	459.5	128.8	262.7	447.9	159.6
Spain, Catalonia	146.8	188.1	106.8	4.8	7.8	1.7	44.5	60.2	28.1	179.4	229.1	130.8	483.4	689.9	310.1	512.5	797.8	346.3
Spain, Valencia	155.3	192.1	120.0	10.6	13.7	7.3	46.3	59.7	32.5	197.1	265.2	132.0	506.9	697.5	349.2	610.7	831.3	476.9
Sweden	125.2	165.2	85.9	4.7	5.5	3.8	45.4	60.5	29.8	167.3	211.2	122.7	344.7	472.3	231.8	419.9	730.0	224.2
The Netherlands	100.3	118.2	82.6	10.1	9.4	10.9	41.7	43.3	40.1	133.6	155.0	111.9	371.5	491.3	267.4	339.4	571.1	213.1
UK, England/Wales	95.4	119.4	72.4	1.9	1.9	2.0	47.9	57.5	38.3	125.0	150.3	100.2	312.0	412.9	222.3	289.1	494.7	167.6
UK, Scotland	108.4	128.3	90.0	5.0	8.1	1.7	49.5	62.2	37.4	141.0	167.6	115.5	321.0	401.1	255.4	365.1	535.1	271.9

Categories may not add up to total or to 100% because of missing values

A2 INCIDENT PATIENTS ACCEPTED FOR RRT IN 2002 (residents only) AT DAY 1

Table A.2.4
Incident rates per million population, unadjusted
at day 1, by cause of renal failure

	Total		GN		PN		PKD		DM						HT		RVD		Misc		Unkn		Missing	
	Pmp	%	Pmp	%	Pmp	%	Pmp	%	Type I		Type II		Both		Pmp	%	Pmp	%	Pmp	%	Pmp	%	Pmp	%
									Pmp	%	Pmp	%	Pmp	%										
Austria	131.4	100	15.3	12	5.5	4	5.2	4	5.2	4	40.1	31	45.3	34	9.9	8	11.9	9	23.9	18	14.4	11	0	0
Belgium, Dutch-speaking	169.8	100	15.7	9	8.5	5	8.0	5	9.9	6	29.1	17	38.9	23	18.7	11	25.6	15	31.9	19	21.9	13	0	0
Denmark	128.7	100	11.7	9	8.2	6	6.7	5	15.8	12	18.2	14	34.0	26	17.1	13	1.5	1	23.1	18	26.4	21	0	0
Finland	91.6	100	10.8	12	6.4	7	8.1	9	17.1	19	19.1	21	36.2	39	4.2	5	0.4	0	15.0	16	10.6	12	0	0
Greece	165.4	100	21.1	13	10.5	6	6.3	4	8.8	5	35.2	21	44.0	27	17.1	10	4.1	2	16.3	10	46.1	28	0	0
Iceland	76.5	100	3.5	5	0	0	0	0					7.0	9	38.3	50	0	0	20.9	27	7.0	9	0	0
Norway	92.5	100	16.1	17	6.8	7	8.2	9	5.9	6	5.3	6	11.2	12	23.8	26	0.2	0	22.3	24	4.0	4	0	0
Spain, Basque country	98.5	100	10.1	10	8.2	8	6.3	6	4.3	4	12.1	12	16.4	17	10.6	11	4.8	5	13.5	14	28.5	29	0	0
Spain, Catalonia	146.8	100	22.1	15	10.8	7	10.1	7	2.8	2	28.0	19	30.7	21	15.2	10	9.2	6	17.4	12	31.0	21	0	0
Spain, Valencia	155.3	100	18.8	12	15.0	10	8.0	5					26.1	17	24.2	16	7.7	5	12.3	8	43.2	28	0	0
Sweden	125.2	100	17.6	14	5.2	4	7.2	6	12.9	10	16.9	14	29.8	24	12.7	10	13.3	11	26.6	21	11.5	9	0	0
The Netherlands	100.3	100	10.3	10	5.0	5	5.7	6	5.2	5	12.1	12	17.3	17	12.3	12	9.6	10	19.6	20	20.6	21	0	0
UK, England/Wales	95.4	100	11.7	14	6.1	7	6.0	7	9.2	11	7.4	9	16.6	17	5.6	7	4.7	5	15.0	18	19.5	23	0	0
UK, Scotland	108.4	100	15.8	15	10.1	9	6.7	6	11.9	11	7.1	7	19.0	18	3.2	3	9.7	9	16.0	15	27.5	25	0	0

Abbreviations used: GN: glomerulonephritis/sclerosis; PN: pyelonephritis; PKD: polycystic kidneys, adult type; DM: diabetes mellitus; HT: hypertension; RVD: renal vascular disease; Misc: miscellaneous; Unkn: unknown
 When cells are left empty, the data are unavailable
 Categories may not add up to total or to 100% because of missing values

Table A.2.5
Incident rates per million population, adjusted
at day 1, by cause of renal failure, adjusted for age and gender

	Total	GN	PN	PKD	DM			HT	RVD	Misc	Unkn
					Type I	Type II	Both				
					Pmp	Pmp	Pmp				
Austria	131.2	15.1	5.2	5.2	4.9	40.1	45.1	10.5	12.2	23.9	14.0
Belgium, Dutch-speaking	159.5	15.2	8.0	7.5	9.2	26.1	35.4	18.2	25.1	28.9	20.7
Denmark	134.5	11.8	8.7	6.3	15.6	19.4	35.0	18.5	1.8	24.1	28.3
Finland	90.5	10.8	6.3	7.3	16.3	18.8	35.1	4.6	0.3	15.4	10.7
Greece	152.6	19.3	10.6	5.8	7.9	31.5	39.4	16.4	3.9	14.7	42.4
Iceland	90.1	4.2	0	0			7.7	49.7	0	21.8	6.6
Norway	94.4	16.7	7.2	8.4	5.9	5.5	11.4	23.4	0.3	23.3	3.8
Spain, Basque country	85.8	9.7	6.7	5.6	3.8	10.7	14.5	9.6	3.9	13.7	22.2
Spain, Catalonia	141.4	21.5	10.5	9.4	2.6	27.0	29.6	14.9	9.1	16.3	30.0
Spain, Valencia	153.3	18.4	14.2	8.0			25.4	24.1	7.8	12.6	42.7
Sweden	118.3	17.4	4.8	6.5	12.4	16.0	28.4	11.9	12.5	24.8	10.8
The Netherlands	107.7	10.6	5.2	5.6	5.2	13.1	18.3	13.6	11.3	20.6	22.5
UK, England/Wales	96.7	11.9	6.5	6.0	9.2	7.7	16.8	5.7	4.8	15.1	19.6
UK, Scotland	107.2	16.2	10.3	6.1	11.7	6.9	18.6	3.2	9.6	15.1	27.6

Abbreviations used: GN: glomerulonephritis/sclerosis; PN: pyelonephritis; PKD: polycystic kidneys, adult type; DM: diabetes mellitus; HT: hypertension; RVD: renal vascular disease; Misc: miscellaneous; Unkn: unknown
When cells are left empty, the data are unavailable
Categories may not add up to total or to 100% because of missing values

A3 INCIDENT PATIENTS ACCEPTED FOR RRT IN 2002 (residents only) AT DAY 90

Table A.3.1
Incident counts and percentage
at day 90, by age and gender

	All		0-19						20-44						45-64						65-74						75+									
			All		Men		Women		All		Men		Women		All		Men		Women		All		Men		Women											
	N	%	N	%	N	%	N	%	N	%	N	%	N	%	N	%	N	%	N	%	N	%	N	%	N	%	N	%	N	%						
Austria	932	100	566	100	366	100	17	2	10	2	7	2	126	14	86	15	40	11	359	39	243	43	116	32	239	26	126	22	113	31	191	20	101	18	90	25
Belgium, Dutch-speaking	907	100	518	100	389	100	5	1	2	0	3	1	80	9	46	9	34	9	243	27	153	30	90	23	287	32	167	32	120	31	292	32	150	29	142	37
Denmark	647	100	398	100	249	100	11	2	5	1	6	2	88	14	47	12	41	16	225	35	133	33	92	37	184	28	117	29	67	27	139	21	96	24	43	17
Finland	462	100	297	100	165	100	10	2	6	2	4	2	80	17	50	17	30	18	210	45	146	49	64	39	109	24	68	23	41	25	53	11	27	9	26	16
Greece	1663	100	1038	100	625	100	16	1	7	1	9	1	169	10	111	11	58	9	434	26	286	28	148	24	602	36	371	36	231	37	387	23	229	22	158	25
Iceland	22	100	8	100	14	100	1	5	1	13	0	0	4	18	1	13	3	21	3	14	1	13	2	14	8	36	3	38	5	36	6	27	2	25	4	29
Norway	393	100	268	100	125	100	16	4	9	3	7	6	62	16	38	14	24	19	131	33	86	32	45	36	98	25	70	26	28	22	86	22	65	24	21	17
Spain, Basque country	195	100	134	100	61	100	8	4	4	3	4	7	18	9	11	8	7	11	61	31	43	32	18	30	57	29	43	32	14	23	39	20	24	18	15	25
Spain, Catalonia	902	100	565	100	337	100	6	1	5	1	1	0	115	13	79	14	36	11	260	29	164	29	96	28	285	32	184	33	101	30	236	26	133	24	103	31
Spain, Valencia	623	100	378	100	245	100	10	2	7	2	3	1	77	12	51	13	26	11	178	29	115	30	63	26	184	30	116	31	68	28	172	28	88	23	84	34
Sweden	1015	100	659	100	356	100	12	1	6	1	6	2	132	13	88	13	44	12	367	36	232	35	135	38	235	23	151	23	84	24	269	27	182	28	87	24
The Netherlands	1496	100	870	100	626	100	39	3	19	2	20	3	242	16	127	15	115	18	509	34	292	34	217	35	414	28	254	29	160	26	292	20	178	20	114	18
UK, England/Wales	3402	100	2082	100	1320	100	80	2	47	2	33	3	656	19	397	19	259	20	1096	32	651	31	445	34	888	26	563	27	325	25	682	20	424	20	258	20
UK, Scotland	491	100	274	100	217	100	6	1	5	2	1	0	85	17	51	19	34	16	165	34	96	35	69	32	124	25	67	24	57	26	111	23	55	20	56	26

*Percentages are row percentages
Categories may not add up to total or to 100% because of missing values*

A3 INCIDENT PATIENTS ACCEPTED FOR RRT IN 2002 (residents only) AT DAY 90

Table A.3.2
Gender, mean and median age of incident patients
at day 90

	All				Men				Women			
	%	Mean (years)	SD	Median (years)	%	Mean (years)	SD	Median (years)	%	Mean (years)	SD	Median (years)
Austria	100	61.3	16.0	63.5	60.7	59.9	15.9	61.9	39.3	63.4	15.9	68.0
Belgium, Dutch-speaking	100	66.5	14.5	69.8	57.1	65.8	14.2	68.6	42.9	67.5	14.8	71.2
Denmark	100	62.0	15.6	65.0	61.5	63.4	14.9	66.1	38.5	59.7	16.3	63.5
Finland	100	57.3	15.8	57.6	64.3	56.8	15.1	57.3	35.7	58.1	16.8	59.4
Greece	100	64.7	15.0	68.4	62.4	64.5	14.8	68.0	37.6	65.0	15.2	69.0
Iceland	100	60.0	21.9	70.8	36.4	55.6	26.4	68.6	63.6	62.6	19.5	71.4
Norway	100	59.6	18.0	63.4	68.2	60.9	17.4	65.3	31.8	56.8	19.1	59.1
Spain, Basque country	100	61.4	17.2	65.9	68.7	62.1	15.7	66.1	31.3	60.0	20.1	64.3
Spain, Catalonia	100	63.7	15.7	68.0	62.6	62.6	16.0	67.2	37.4	65.5	15.0	69.0
Spain, Valencia	100	63.4	16.3	67.4	60.7	62.0	16.5	66.0	39.3	65.5	15.7	69.1
Sweden	100	62.5	15.9	64.9	64.9	62.7	16.0	65.6	35.1	62.1	15.6	64.2
The Netherlands	100	60.1	16.9	63.6	58.2	61.1	16.5	64.8	41.8	58.8	17.5	61.9
UK, England/Wales	100	59.6	17.3	63.3	61.2	60.0	17.2	63.9	38.8	59.0	17.4	62.2
UK, Scotland	100	60.8	16.4	64.2	55.8	59.5	16.7	62.9	44.2	62.4	15.8	65.7

A3 INCIDENT PATIENTS ACCEPTED FOR RRT IN 2002 (residents only) AT DAY 90

Table A.3.3
Incident rates per million population, unadjusted
at day 90, by age and gender

	All			0-19			20-44			45-64			65-74			75+		
	All	Men	Women	All	Men	Women	All	Men	Women	All	Men	Women	All	Men	Women	All	Men	Women
	Pmp	Pmp	Pmp	Pmp	Pmp	Pmp	Pmp	Pmp	Pmp	Pmp	Pmp	Pmp	Pmp	Pmp	Pmp	Pmp	Pmp	Pmp
Austria	115.6	144.5	88.2	9.4	10.8	7.9	42.0	56.6	27.0	181.2	248.1	115.8	353.6	415.4	303.3	320.8	540.3	220.4
Belgium, Dutch-speaking	151.6	175.5	128.2	3.7	2.9	4.6	37.9	43.0	32.8	162.6	203.3	121.3	491.2	614.8	383.8	651.4	899.0	504.6
Denmark	120.4	149.8	91.6	8.5	7.5	9.5	46.8	49.3	44.3	160.1	188.4	131.5	440.8	598.8	301.7	365.6	682.6	179.5
Finland	88.9	117.0	62.1	7.9	9.3	6.5	46.3	56.8	35.4	148.0	206.3	89.9	249.0	349.9	168.5	151.6	243.0	109.0
Greece	151.1	190.4	112.6	6.9	5.8	8.0	40.4	52.0	28.3	166.7	226.7	110.3	493.4	658.3	351.8	581.9	814.1	411.7
Iceland	76.5	55.6	97.5	11.5	22.6	0	37.6	18.6	56.9	49.4	32.5	66.9	436.0	342.2	521.9	394.4	315.6	450.6
Norway	86.6	118.1	55.1	13.6	15.3	11.9	38.8	47.6	30.0	120.6	158.3	82.9	303.7	433.2	173.8	244.3	368.8	119.5
Spain, Basque country	94.2	132.8	57.5	22.7	22.1	23.3	21.9	26.5	17.2	116.6	167.5	67.6	263.1	429.5	120.2	249.8	430.0	149.6
Spain, Catalonia	138.6	176.5	102.0	4.8	7.8	1.7	43.8	58.7	28.1	172.1	219.7	125.6	457.7	647.7	298.3	465.2	712.1	321.3
Spain, Valencia	150.5	186.2	116.2	11.8	16.0	7.3	45.7	59.7	31.3	190.7	252.1	132.0	488.3	679.9	329.8	586.8	795.2	460.5
Sweden	113.7	149.2	79.0	5.6	5.5	5.8	44.8	58.5	30.4	159.5	200.0	118.3	317.6	434.9	213.9	339.2	593.2	178.9
The Netherlands	92.6	108.8	76.8	9.9	9.4	10.4	40.9	42.3	39.4	125.3	142.3	107.9	340.3	448.9	245.9	294.1	508.3	177.4
UK, England/Wales	90.1	112.8	68.4	8.5	9.8	7.2	49.3	59.9	38.8	121.2	145.6	97.4	281.0	378.6	194.2	237.0	396.5	142.7
UK, Scotland	97.1	112.7	82.7	5.0	8.1	1.7	47.8	58.8	37.4	131.4	156.2	107.7	276.4	331.8	231.1	304.7	426.5	237.9

Categories may not add up to total or to 100% because of missing values

A3 INCIDENT PATIENTS ACCEPTED FOR RRT IN 2002 (residents only) AT DAY 90

Table A.3.4
Incident rates per million population, unadjusted
at day 90, by cause of renal failure

	Total		GN		PN		PKD		DM						HT		RVD		Misc		Unkn		Missing	
	Pmp	%	Pmp	%	Pmp	%	Pmp	%	Type I		Type II		Both		Pmp	%	Pmp	%	Pmp	%	Pmp	%	Pmp	%
									Pmp	%	Pmp	%	Pmp	%										
Austria	115.6	100	14.3	12	5.1	4	5.2	5	5.1	4	34.2	30	39.3	34	8.9	8	10.5	9	18.8	16	13.3	11	0	0
Belgium, Dutch-speaking	151.6	100	14.9	10	7.7	5	8.0	5	8.9	6	26.9	18	35.8	24	15.5	10	22.4	15	27.9	18	18.9	13	0	0
Denmark	120.4	100	11.2	9	8.0	7	6.9	6	15.1	13	16.7	14	31.8	26	15.8	13	1.1	1	21.4	18	24.2	20	0	0
Finland	88.9	100	10.8	12	6.2	7	8.1	9	16.9	19	18.1	20	35.0	39	3.8	4	0.4	0	14.1	16	10.6	12	0	0
Greece	151.1	100	20.3	13	10.0	7	6.1	4	7.9	5	32.4	21	40.4	27	15.7	10	3.7	2	13.7	9	41.3	27	0	0
Iceland	76.5	100	3.5	5	0	0	0	0					7.0	9	38.3	50	0	0	20.9	27	7.0	9	0	0
Norway	86.6	100	15.4	18	6.6	8	7.7	9	5.9	7	5.1	6	11.0	13	22.7	26	0.2	0	19.4	22	3.5	4	0	0
Spain, Basque country	94.2	100	9.7	10	7.7	8	5.8	6	4.3	5	12.1	13	16.4	17	10.1	11	4.3	5	13.0	14	27.0	29	0	0
Spain, Catalonia	138.6	100	21.4	15	10.1	7	10.1	7	2.8	2	26.1	19	28.9	21	14.1	10	8.3	6	15.7	11	29.8	22	0	0
Spain, Valencia	150.5	100	18.4	12	15.0	10	8.0	5					24.6	16	23.2	15	7.5	5	11.6	8	42.3	28	0	0
Sweden	113.7	100	16.9	15	4.8	4	7.2	6	12.7	11	15.2	14	27.9	25	11.2	10	11.8	10	22.6	20	10.0	9	0	0
The Netherlands	92.6	100	9.9	11	5.0	5	5.6	6	5.1	5	11.6	13	16.7	18	11.6	13	8.6	9	16.5	18	18.7	20	0	0
UK, England/Wales	90.1	100	11.6	14	6.2	8	6.0	7	9.0	11	7.4	9	16.4	18	5.4	7	4.0	5	13.9	17	17.8	22	0	0
UK, Scotland	97.1	100	15.0	16	9.5	10	6.7	7	11.3	12	6.9	7	18.2	19	2.4	2	7.9	8	14.2	15	22.8	24	0	0

Abbreviations used: GN: glomerulonephritis/sclerosis; PN: pyelonephritis; PKD: polycystic kidneys, adult type; DM: diabetes mellitus; HT: hypertension; RVD: renal vascular disease; Misc: miscellaneous; Unkn: unknown
When cells are left empty, the data are unavailable
Categories may not add up to total or to 100% because of missing values

Table A.3.5
Incident rates per million population, adjusted
at day 90, by cause of renal failure, adjusted for age and gender

	Total	GN	PN	PKD	DM			HT	RVD	Misc	Unkn
					Type I	Type II	Both				
					Pmp	Pmp	Pmp				
Austria	115.2	14.1	4.8	5.2	4.8	34.4	39.2	9.4	10.7	18.9	12.9
Belgium, Dutch-speaking	142.3	14.4	7.3	7.5	8.3	24.1	32.4	15.0	22.1	25.1	18.0
Denmark	125.3	11.2	8.6	6.5	14.8	17.8	32.6	16.9	1.3	22.5	25.8
Finland	87.6	10.8	6.1	7.3	16.2	17.5	33.7	4.2	0.3	14.4	10.7
Greece	140.5	18.7	10.1	5.6	7.1	29.2	36.3	15.0	3.5	12.7	38.7
Iceland	90.1	4.2	0	0			7.7	49.7	0	21.8	6.6
Norway	88.6	16.0	7.0	8.0	5.9	5.2	11.1	22.5	0.3	20.5	3.4
Spain, Basque country	82.3	9.3	6.2	5.1	3.8	10.7	14.5	9.2	3.4	13.2	21.3
Spain, Catalonia	133.4	20.9	9.8	9.4	2.6	25.3	27.9	13.9	8.1	14.7	28.6
Spain, Valencia	148.3	18.0	14.3	8.0			24.0	22.9	7.5	11.8	41.8
Sweden	108.2	16.8	4.5	6.5	12.2	14.5	26.8	10.6	11.1	21.4	9.4
The Netherlands	99.4	10.2	5.2	5.4	5.1	12.7	17.8	12.9	10.1	17.4	20.5
UK, England/Wales	91.2	11.7	6.6	6.0	9.0	7.6	16.6	5.5	4.2	14.0	18.0
UK, Scotland	95.4	15.5	9.6	6.1	11.1	6.7	17.8	2.5	7.8	13.3	22.5

Abbreviations used: GN: glomerulonephritis/sclerosis; PN: pyelonephritis; PKD: polycystic kidneys, adult type; DM: diabetes mellitus; HT: hypertension; RVD: renal vascular disease; Misc: miscellaneous; Unkn: unknown
When cells are left empty, the data are unavailable
Categories may not add up to total or to 100% because of missing values

A3 INCIDENT PATIENTS ACCEPTED FOR RRT IN 2002 (residents only) AT DAY 90

Table A.3.6
Incident counts
at day 90, by established therapy

	Total	Haemodialysis					Peritoneal dialysis				Transplant			Unkn	Missing		
		Hospital/ centre	Home	HD, type unkn	HF	HDF	Total HD/ HF/HDF	APD	CAPD	PD, type unkn	Total PD	Living	Cadaver			Tx, type unkn	Total Tx
Austria	932	754	0	1	2	61	818	15	66	0	81	15	18	0	33	0	0
Belgium, Dutch-speaking	907	580	1	73	1	120	775	73	47	4	124	1	7	0	8	0	0
Denmark	647	435	0	0			435	97	98	0	195	11	4	1	16	0	1
Finland	462	326	10	0		2	338	45	78	0	123	0	1	0	1	0	0
Greece	1663	1439	0	0	20	5	1464	19	169	0	188	11	0	0	11	0	0
Iceland	22	15	0	0			15	0	0	5	5	2	0	0	2	0	0
Norway	393	256					256	0	0	83	83	38	16	0	54	0	0
Spain, Basque country	195	139	0	0			139	0	52	0	52	0	3	0	3	1	0
Spain, Catalonia	902	817	1	0			818	31	30	0	61	6	16	0	22	0	1
Spain, Valencia	623	561	0	0			561	1	58	0	59	0	1	2	3	0	0
Sweden	1015	643	8	0			651	14	245	61	320	38	6	0	44	0	0
The Netherlands	1496	1008	0	0			1008	85	337	1	423	46	18	1	65	0	0
UK, England/Wales	3402	2189	3	1	24		2217	125	868	4	997	25	69	44	138	1	0
UK, Scotland	491	359	1	0			360	19	103	0	122	6	3	0	9	0	0

Abbreviations used: HD: haemodialysis; Unkn: unknown; HF: haemofiltration; HDF: haemodiafiltration; APD: automated peritoneal dialysis; CAPD: continuous ambulatory peritoneal dialysis; PD: peritoneal dialysis; Tx: transplant
When cells are left empty, the data are unavailable
Categories may not add up to total or to 100% because of missing values

A3 INCIDENT PATIENTS ACCEPTED FOR RRT IN 2002 (residents only) AT DAY 90

Table A.3.7
Incident rates per million population, unadjusted
at day 90, by established therapy

	Total	Haemodialysis						Peritoneal dialysis				Transplant			Unkn	Missing	
		Hospital/ centre	Home	HD, type unkn	HF	HDF	Total HD/ HF/HDF	APD	CAPD	PD, type unkn	Total PD	Living	Cadaver	Tx, type unkn			Total Tx
Austria	115.6	93.5	0	0.1	0.2	7.6	101.4	1.9	8.2	0	10.0	1.9	2.2	0	4.1	0	0
Belgium, Dutch-speaking	151.6	96.9	0.2	12.2	0.2	20.1	129.5	12.2	7.9	0.7	20.7	0.2	1.2	0	1.3	0	0
Denmark	120.4	80.9	0	0			80.9	18.0	18.2	0	36.3	2.0	0.7	0.2	3.0	0	0.2
Finland	88.9	62.8	1.9	0		0.4	65.1	8.7	15.0	0	23.7	0	0.2	0	0.2	0	0
Greece	151.1	130.8	0	0	1.8	0.5	133.1	1.7	15.4	0	17.1	1.0	0	0	1.0	0	0
Iceland	76.5	52.2	0	0			52.2	0	0	17.4	17.4	7.0	0	0	7.0	0	0
Norway	86.6	56.4					56.4	0	0	18.3	18.3	8.4	3.5	0	11.9	0	0
Spain, Basque country	94.2	67.1	0	0			67.1	0	25.1	0	25.1	0	1.4	0	1.4	0.5	0
Spain, Catalonia	138.6	125.6	0.2	0			125.7	4.8	4.6	0	9.4	0.9	2.5	0	3.4	0	0.2
Spain, Valencia	150.5	135.5	0	0			135.5	0.2	14.0	0	14.3	0	0.2	0.5	0.7	0	0
Sweden	113.7	72.0	0.9	0			72.9	1.6	27.5	6.8	35.9	4.3	0.7	0	4.9	0	0
The Netherlands	92.6	62.4	0	0			62.4	5.3	20.9	0.1	26.2	2.8	1.1	0.1	4.0	0	0
UK, England/Wales	90.1	58.0	0.1	0	0.6		58.7	3.3	23.0	0.1	26.4	0.7	1.8	1.2	3.7	0	0
UK, Scotland	97.1	71.0	0.2	0			71.2	3.8	20.4	0	24.1	1.2	0.6	0	1.8	0	0

Abbreviations used: HD: haemodialysis; Unkn: unknown; HF: haemofiltration; HDF: haemodiafiltration; APD: automated peritoneal dialysis; CAPD: continuous ambulatory peritoneal dialysis; PD: peritoneal dialysis; Tx: transplant
When cells are left empty, the data are unavailable
Categories may not add up to total or to 100% because of missing values

A3 INCIDENT PATIENTS ACCEPTED FOR RRT IN 2002 (residents only) AT DAY 90

Table A.3.8
Incident rates per million population, adjusted
at day 90, by established therapy, adjusted for age and gender

	Total	Haemodialysis						Peritoneal dialysis				Transplant			Unkn	Missing		
		Hospital/ centre		Home	HD, type unkn	HF	HDF	Total HD/ HF/HDF	APD	CAPD	PD, type unkn	Total PD	Living	Cadaver			Tx, type unkn	Total Tx
		Pmp	Pmp	Pmp	Pmp	Pmp	Pmp	Pmp	Pmp	Pmp	Pmp	Pmp	Pmp	Pmp			Pmp	Pmp
Austria	115.2	93.9	0	0.2	0.2	7.3	101.6	1.8	7.8	0	9.6	1.9	2.1	0	4.0	0	0	
Belgium, Dutch-speaking	142.3	90.0	0.1	11.6	0.1	19.2	121.0	11.9	7.4	0.7	20.0	0.2	1.1	0	1.3	0	0	
Denmark	125.3	84.9	0	0			84.9	18.6	18.7	0	37.3	2.1	0.7	0.2	3.0	0	0.2	
Finland	87.6	61.7	2.0	0		0.4	64.1	8.5	15.0	0	23.4	0	0.2	0	0.2	0	0	
Greece	140.5	121.6	0	0	1.7	0.5	123.8	1.6	14.2	0	15.7	1.0	0	0	1.0	0	0	
Iceland	90.1	61.2	0	0			61.2	0	0	23.1	23.1	5.8		0	5.8	0	0	
Norway	88.6	58.0					58.0	0	0	18.6	18.6	8.3	3.8	0	12.1	0	0	
Spain, Basque country	82.3	57.0	0	0			57.0	0	23.1	0	23.1	0	1.8	0	1.8	0.4	0	
Spain, Catalonia	133.4	120.6	0.1	0			120.7	4.7	4.6	0	9.3	0.8	2.4	0	3.2	0	0.1	
Spain, Valencia	148.3	134.0	0	0			134.0	0	13.5	0	13.5	0	0.2	0.6	0.8	0	0	
Sweden	108.2	67.7	0.8	0			68.6	1.6	26.3	6.8	34.7	4.2	0.7	0	4.9	0	0	
The Netherlands	99.4	68.7	0	0			68.7	5.3	21.5	0.1	26.8	2.7	1.1	0.1	3.9	0	0	
UK, England/Wales	91.2	58.7	0.1	0	0.7		59.5	3.4	23.3	0.1	26.7	0.7	1.8	1.2	3.7	0	0	
UK, Scotland	95.4	69.5	0.2	0			69.7	3.6	20.3	0	23.8	1.3	0.6	0	1.9	0	0	

Abbreviations used: HD: haemodialysis; Unkn: unknown; HF: haemofiltration; HDF: haemodiafiltration; APD: automated peritoneal dialysis; CAPD: continuous ambulatory peritoneal dialysis; PD: peritoneal dialysis; Tx: transplant
When cells are left empty, the data are unavailable
Categories may not add up to total or to 100% because of missing values

A3 INCIDENT PATIENTS ACCEPTED FOR RRT IN 2002 (residents only) AT DAY 90

Table A.3.9
Percentage of established therapy, unadjusted
at day 90

	Total	Haemodialysis					Peritoneal dialysis				Transplant				Unkn	Missing	
		Hospital/ centre	Home	HD, type unkn	HF	HDF	Total HD/ HF/HDF	APD	CAPD	PD, type unkn	Total PD	Living	Cadaver	Tx, type unkn			Total Tx
	%	%	%	%	%	%	%	%	%	%	%	%	%	%	%	%	%
Austria	100	81	0	0	0	7	88	2	7	0	9	2	2	0	4	0	0
Belgium, Dutch-speaking	100	64	0	8	0	13	85	8	5	0	14	0	1	0	1	0	0
Denmark	100	67	0	0			67	15	15	0	30	2	1	0	2	0	0
Finland	100	71	2	0		0	73	10	17	0	27	0	0	0	0	0	0
Greece	100	87	0	0	1	0	88	1	10	0	11	1	0	0	1	0	0
Iceland	100	68	0	0			68	0	0	23	23	9	0	0	9	0	0
Norway	100	65					65	0	0	21	21	10	4	0	14	0	0
Spain, Basque country	100	71	0	0			71	0	27	0	27	0	2	0	2	1	0
Spain, Catalonia	100	91	0	0			91	3	3	0	7	1	2	0	2	0	0
Spain, Valencia	100	90	0	0			90	0	9	0	9	0	0	0	0	0	0
Sweden	100	63	1	0			64	1	24	6	32	4	1	0	4	0	0
The Netherlands	100	67	0	0			67	6	23	0	28	3	1	0	4	0	0
UK, England/Wales	100	64	0	0	1		65	4	26	0	29	1	2	1	4	0	0
UK, Scotland	100	73	0	0			73	4	21	0	25	1	1	0	2	0	0

Abbreviations used: HD: haemodialysis; Unkn: unknown; HF: haemofiltration; HDF: haemodiafiltration; APD: automated peritoneal dialysis; CAPD: continuous ambulatory peritoneal dialysis; PD: peritoneal dialysis; Tx: transplant
When cells are left empty, the data are unavailable
Categories may not add up to total or to 100% because of missing values

A3 INCIDENT PATIENTS ACCEPTED FOR RRT IN 2002 (residents only) AT DAY 90

Table A.3.10
Percentage of established therapy, unadjusted
at day 90, by age, gender and primary diagnosis

	Total				0-19				20-44				45-64				65-74				75+				Men				Women				DM				Non DM			
	HD	PD	TX	Oth	HD	PD	TX	Oth	HD	PD	TX	Oth	HD	PD	TX	Oth	HD	PD	TX	Oth	HD	PD	TX	Oth	HD	PD	TX	Oth	HD	PD	TX	Oth	HD	PD	TX	Oth	HD	PD	TX	Oth
	%	%	%	%	%	%	%	%	%	%	%	%	%	%	%	%	%	%	%	%	%	%	%	%	%	%	%	%	%	%	%	%	%	%	%	%	%	%	%	%
Austria	81	9	4	7	41	29	24	6	60	16	11	13	78	11	4	8	89	4	1	6	94	5	0	2	80	8	4	8	82	9	4	5	83	8	4	6	80	9	3	7
Belgium, Dutch-speaking	72	14	1	13	40	60	0	0	53	31	1	15	65	18	2	14	74	11	0	14	82	7	0	12	70	14	1	14	74	13	1	12	72	10	1	16	72	15	1	13
Denmark	67	30	2	0	36	45	18	0	51	41	8	0	62	35	3	0	72	27	1	0	82	18	0	0	67	30	3	0	67	31	2	0	70	29	1	0	66	30	3	0
Finland	73	27	0	0	20	80	0	0	56	43	0	1	74	25	0	0	82	18	0	0	83	17	0	0	71	28	0	1	76	24	0	0	64	35	1	1	79	21	0	0
Greece	90	14	1	2	38	44	19	0	88	8	3	1	84	13	1	2	86	12	0	2	90	9	0	1	87	11	1	2	87	12	1	1	82	16	0	2	88	10	1	1
Iceland	68	23	9	0	0	100	0	0	75	0	25	0	33	67	0	0	75	25	0	0	83	17	0	0	50	38	13	0	79	14	7	0	100	0	0	0	65	25	10	0
Norway	65	21	14	0	31	19	50	0	50	23	27	0	66	16	18	0	71	22	6	0	73	27	0	0	67	19	14	0	62	25	14	0	64	18	18	0	65	22	13	0
Spain, Basque country	76	36	2	1	25	50	25	0	61	33	0	6	74	25	2	0	75	25	0	0	79	21	0	0	69	30	1	1	77	20	3	0	59	41	0	0	74	24	2	1
Spain, Catalonia	91	7	2	0	83	0	17	0	73	16	10	1	86	11	3	0	97	3	0	0	97	3	0	0	89	8	3	0	93	5	1	0	93	6	1	0	90	7	3	0
Spain, Valencia	90	11	0	0	50	30	20	0	68	32	0	0	90	9	1	0	95	5	0	0	97	3	0	0	90	9	1	0	89	10	0	0	88	12	0	0	90	9	1	0
Sweden	64	32	4	0	25	8	67	0	51	38	11	0	55	40	5	0	72	28	0	0	78	22	0	0	63	33	4	0	67	28	5	0	62	36	2	0	65	30	5	0
The Netherlands	67	28	4	0	26	59	15	0	47	42	11	0	59	35	6	0	79	20	1	0	87	13	0	0	67	29	4	0	68	28	4	0	73	26	1	0	66	29	5	0
UK, England/Wales	64	29	4	2	28	36	36	0	47	41	9	3	58	34	5	3	74	25	0	1	83	16	0	1	65	29	4	2	64	31	4	2	63	34	1	2	65	28	5	2
UK, Scotland	73	25	2	0	17	83	0	0	60	32	8	0	67	32	1	0	81	19	0	0	86	14	0	0	73	25	1	0	73	24	2	0	68	30	1	0	74	24	2	0

Categories may not add up to total or to 100% because of missing values

A4 PREVALENT PATIENTS ON RRT IN 2002 (residents only)

Table A.4.1
Prevalence counts and percentage
prevalent patients on December 31, by age and gender

	All		0-19						20-44						45-64						65-74						75+									
			All		Men		Women		All		Men		Women		All		Men		Women		All		Men		Women											
	N	%	N	%	N	%	N	%	N	%	N	%	N	%	N	%	N	%	N	%	N	%	N	%	N	%	N	%								
Austria	6300	100	3832	100	2468	100	86	1	48	1	38	2	1420	23	874	23	546	22	2789	44	1774	46	1015	41	1236	20	749	20	487	20	769	12	387	10	382	15
Belgium, Dutch-speaking	5279	100	2932	100	2347	100	17	0	10	0	7	0	781	15	461	16	320	14	2012	38	1192	41	820	35	1382	26	728	25	654	28	1087	21	541	18	546	23
Denmark	3820	100	2384	100	1436	100	79	2	47	2	32	2	966	25	585	25	381	27	1597	42	1013	42	584	41	719	19	445	19	274	19	459	12	294	12	165	11
Finland	3302	100	1958	100	1344	100	122	4	79	4	43	3	741	22	425	22	316	24	1546	47	968	49	578	43	642	19	358	18	284	21	251	8	128	7	123	9
Greece	9253	100	5679	100	3574	100	115	1	64	1	51	1	1587	17	1039	18	548	15	3259	35	2028	36	1231	34	2631	28	1575	28	1056	30	1578	17	924	16	654	18
Iceland	126	100	65	100	61	100	8	6	5	8	3	5	41	33	18	28	23	38	39	31	22	34	17	28	21	17	11	17	10	16	17	13	9	14	8	13
Norway	2911	100	1864	100	1047	100	65	2	44	2	21	2	723	25	428	23	295	28	1249	43	805	43	444	42	520	18	342	18	178	17	354	12	245	13	109	10
Spain, Basque country	1850	100	1150	100	700	100	38	2	19	2	19	3	386	21	226	20	160	23	760	41	480	42	280	40	449	24	287	25	162	23	205	11	129	11	76	11
Spain, Catalonia	6622	100	4069	100	2553	100	50	1	29	1	21	1	1271	19	818	20	453	18	2518	38	1568	39	950	37	1625	25	989	24	636	25	1158	17	665	16	493	19
Spain, Valencia	4474	100	2661	100	1813	100	56	1	39	1	17	1	832	19	509	19	323	18	1723	39	1063	40	660	36	1067	24	617	23	450	25	795	18	433	16	362	20
Sweden	6777	100	4275	100	2502	100	121	2	72	2	49	2	1444	21	892	21	552	22	2993	44	1914	45	1079	43	1235	18	753	18	482	19	984	15	644	15	340	14
The Netherlands	10618	100	6206	100	4412	100	279	3	160	3	119	3	2626	25	1561	25	1065	24	4624	44	2738	44	1886	43	2077	20	1169	19	908	21	1012	10	578	9	434	10
UK, England/Wales	22697	100	13777	100	8920	100	144	1	90	1	54	1	6354	28	3753	27	2601	29	9139	40	5538	40	3601	40	4386	19	2694	20	1692	19	2674	12	1702	12	972	11
UK, Scotland	3536	100	2047	100	1489	100	83	2	61	3	22	1	1055	30	581	28	474	32	1356	38	829	40	527	35	665	19	374	18	291	20	377	11	202	10	175	12

*Percentages are row percentages
 Categories may not add up to total or to 100% because of missing values*

Table A.4.2
Gender, mean and median age
prevalent patients on December 31

	All				Men				Women			
	%	Mean (years)	SD	Median (years)	%	Mean (years)	SD	Median (years)	%	Mean (years)	SD	Median (years)
Austria	100	56.6	15.6	58.3	60.8	56.1	15.1	57.8	39.2	57.4	16.2	59.1
Belgium, Dutch-speaking	100	61.6	15.0	63.8	55.5	60.7	14.8	62.4	44.5	62.8	15.2	65.7
Denmark	100	55.2	16.4	56.3	62.4	55.5	16.3	56.8	37.6	54.8	16.4	55.7
Finland	100	54.1	15.9	55.3	59.3	53.7	15.7	54.9	40.7	54.7	16.2	55.6
Greece	100	60.1	15.9	63.5	61.4	59.6	15.9	62.7	38.6	60.8	15.9	64.4
Iceland	100	51.2	19.8	55.1	51.6	51.7	20.0	55.2	48.4	50.7	19.8	54.9
Norway	100	55.0	16.4	55.7	64.0	55.7	16.3	56.3	36.0	53.7	16.5	55.0
Spain, Basque country	100	56.6	15.9	58.0	62.2	57.1	15.6	58.1	37.8	55.8	16.4	57.7
Spain, Catalonia	100	59.3	15.9	60.6	61.4	58.7	15.9	59.8	38.6	60.2	16.0	62.1
Spain, Valencia	100	59.4	16.2	61.7	59.5	58.7	16.2	60.7	40.5	60.4	16.1	62.8
Sweden	100	56.8	16.1	57.6	63.1	57.1	16.0	57.8	36.9	56.3	16.3	57.3
The Netherlands	100	54.6	16.2	55.8	58.4	54.4	16.1	55.5	41.6	54.9	16.3	56.5
UK, England/Wales	100	55.3	15.9	56.0	60.7	55.7	16.0	56.3	39.3	54.8	15.9	55.5
UK, Scotland	100	53.7	16.7	54.3	57.9	53.3	16.7	53.8	42.1	54.2	16.9	55.1

A4 PREVALENT PATIENTS ON RRT IN 2002 (residents only)

Table A.4.3
Prevalence per million population, unadjusted
prevalent patients on December 31, by age and gender

	All			0-19			20-44			45-64			65-74			75+		
	All	Men	Women	All	Men	Women	All	Men	Women	All	Men	Women	All	Men	Women	All	Men	Women
	Pmp	Pmp	Pmp	Pmp	Pmp	Pmp	Pmp	Pmp	Pmp	Pmp	Pmp	Pmp	Pmp	Pmp	Pmp	Pmp	Pmp	Pmp
Austria	781.2	978.3	595.1	47.5	51.7	43.0	473.3	575.5	368.6	1407.6	1811.3	1013.0	1828.6	2469.2	1307.1	1291.7	2070.3	935.3
Belgium, Dutch-speaking	882.2	993.6	773.7	12.6	14.5	10.6	370.4	430.6	308.3	1346.1	1584.0	1104.9	2365.2	2680.1	2091.6	2424.8	3242.2	1940.1
Denmark	710.7	897.1	528.4	61.1	70.9	50.8	514.0	613.8	411.4	1136.3	1435.3	834.7	1722.4	2277.6	1233.9	1207.4	2090.6	688.9
Spain, Basque country	893.4	1139.4	659.4	107.8	105.1	110.6	469.3	543.6	393.4	1452.9	1869.4	1051.4	2072.8	2866.6	1390.7	1313.3	2311.3	757.9
Spain, Catalonia	1017.8	1271.2	772.4	40.3	45.5	34.9	483.9	607.5	354.0	1666.7	2100.5	1243.1	2609.7	3481.4	1878.3	2282.7	3560.7	1538.0
Spain, Valencia	1080.9	1310.8	859.6	65.8	88.9	41.3	493.8	596.1	388.6	1845.8	2330.0	1383.0	2831.7	3616.4	2182.4	2712.4	3912.6	1984.3
Finland	635.6	771.6	505.8	96.8	122.7	69.7	428.9	482.6	373.2	1089.3	1368.1	812.1	1466.8	1842.3	1166.9	717.8	1152.0	515.6
Greece	840.9	1041.9	643.7	49.4	53.0	45.6	379.0	486.4	267.1	1251.8	1607.4	917.4	2156.4	2794.8	1608.4	2372.6	3284.7	1704.1
Iceland	438.2	451.8	424.6	92.2	113.0	70.5	385.1	335.1	435.9	642.4	714.1	568.5	1144.5	1254.6	1043.7	1117.5	1420.2	901.2
The Netherlands	657.5	776.4	541.0	70.5	79.0	61.6	443.5	520.1	364.7	1138.0	1334.3	937.8	1707.2	2065.9	1395.3	1019.2	1650.6	675.2
Norway	641.4	821.5	461.4	55.2	74.7	35.6	452.2	535.7	368.8	1149.9	1481.9	817.8	1611.4	2116.5	1104.8	1005.7	1390.3	620.1
Sweden	759.3	967.7	555.1	56.5	65.5	47.0	489.6	593.1	381.9	1300.7	1649.7	945.8	1669.2	2168.6	1227.6	1240.7	2098.9	699.2
UK, England/Wales	601.0	746.3	462.0	15.3	18.7	11.8	477.6	566.6	389.3	1010.8	1238.6	787.9	1387.8	1811.6	1011.2	929.3	1591.6	537.6
UK, Scotland	699.5	841.8	567.7	68.6	98.5	37.3	593.7	669.8	521.1	1080.3	1349.2	822.4	1482.4	1851.9	1179.9	1034.9	1566.6	743.6

Categories may not add up to total or to 100% because of missing values

A4 PREVALENT PATIENTS ON RRT IN 2002 (residents only)

Table A.4.4
Prevalence per million population and percentage, unadjusted
prevalent patients on December 31, by cause of renal failure

	Total		GN		PN		PKD		DM						HT		RVD		Misc		Unkn		Missing	
	Pmp	%	Pmp	%	Pmp	%	Pmp	%	Type I		Type II		Both		Pmp	%	Pmp	%	Pmp	%	Pmp	%	Pmp	%
									Pmp	%	Pmp	%	Pmp	%										
Austria	781.2	100	204.8	26	74.2	9	45.5	6	48.5	6	103.4	13	151.9	19	41.3	5	38.7	5	140.7	18	83.5	11	0	0
Belgium, Dutch-speaking	882.2	100	180.5	21	73.9	8	79.4	9	69.7	8	76.5	9	146.2	17	60.7	7	68.2	8	186.5	21	85.1	10	0	0
Denmark	710.7	100	153.9	22	71.8	10	59.4	8	79.4	11	42.4	6	121.9	17	61.2	9	7.3	1	114.8	16	120.6	17	0	0
Finland	635.6	100	152.6	24	75.8	12	74.9	12	110.7	17	52.0	8	162.7	26	19.1	3	1.9	0	111.5	18	37.2	6	0	0
Greece	840.9	100	197.6	23	70.1	8	65.1	8	27.4	3	100	12	127.4	15	64.1	8	18.4	2	69.0	8	229.4	27	0	0
Iceland	438.2	100	93.9	21	55.6	13	24.3	6					31.3	7	100.9	23	3.5	1	107.8	25	20.9	5	0	0
Norway	641.4	100	209.6	33	78.4	12	68.1	11					60.6	9	84.4	13	2.6	0	120.3	19	17.4	3	0	0
Spain, Basque country	893.4	100	241.9	27	113.0	13	95.6	11	35.7	4	36.7	4	72.4	8	66.2	7	35.3	4	115.9	13	153.1	17	0	0
Spain, Catalonia	1018	100	235.5	23	136.9	13	107.1	11	31.4	3	81.2	8	112.5	11	86.7	9	44.7	4	103.4	10	190.6	19	0	0
Spain, Valencia	1081	100	217.2	20	151.2	14	94.7	9					94.9	9	137.7	13	30.2	3	120.6	11	234.3	22	0	0
Sweden	759.3	100	210.3	28	64.2	8	64.8	9	93.6	12	46.6	6	140.2	18	45.4	6	34.2	5	152.0	20	46.7	6	0	0
The Netherlands	657.5	100	140.3	21	78.3	12	54.8	8	31.2	5	29.9	5	61.1	9	57.6	9	29.0	4	119.0	18	117.3	18	0	0
UK, England/Wales	601.0	100	116.0	21	79.6	14	52.9	9	44.3	8	23.2	4	67.5	11	36.0	6	15.9	3	84.8	15	107.9	19	0	0
UK, Scotland	699.5	100	172.1	25	116.9	17	65.9	9	52.8	8	20.0	3	72.8	10	32.4	5	20.6	3	113.4	16	105.0	15	0	0

Abbreviations used: GN: glomerulonephritis/sclerosis; PN: pyelonephritis; PKD: polycystic kidneys, adult type; DM: diabetes mellitus; HT: hypertension; RVD: renal vascular disease; Misc: miscellaneous; Unkn: unknown
 When cells are left empty, the data are unavailable
 Categories may not add up to total or to 100% because of missing values

Table A.4.5
Prevalence per million population, adjusted
prevalent patients on December 31, by cause of renal failure, adjusted for age and gender

	Total	GN	PN	PKD	DM			HT	RVD	Misc	Unkn
					Type I	Type II	Both				
					Pmp	Pmp	Pmp				
Austria	766.3	199.1	71.7	44.0	45.8	103.5	149.2	41.7	40.2	137.2	82.6
Belgium, Dutch-speaking	830.0	172.4	69.4	74.0	63.3	70.3	133.6	58.2	66.0	172.6	82.1
Denmark	710.8	150.7	73.2	56.4	76.0	43.5	119.5	62.3	8.0	117.6	123.1
Finland	616.2	148.6	72.2	70.6	101.5	51.1	152.6	20.1	1.8	111.2	39.1
Greece	803.7	190.1	68.2	62.3	26.0	92.0	118.0	61.7	17.6	65.4	220.3
Iceland	497.0	110.7	59.6	27.5			36.2	129.2	4.1	109.2	20.6
Norway	658.8	217.0	80.1	71.0	58.8	2.3	61.1	85.4	2.5	124.0	17.6
Spain, Basque country	822.3	224.3	103.1	86.4	31.7	33.2	64.8	62.1	32.9	110.9	137.7
Spain, Catalonia	984.6	229.2	130.2	104.1	30.1	78.5	108.6	84.7	44.8	98.8	183.8
Spain, Valencia	1081.9	216.1	146.1	96.2			94.5	141.3	31.5	119.3	236.9
Sweden	734.1	205.8	62.5	60.9	89.4	45.4	134.8	43.0	32.2	148.7	44.7
The Netherlands	672.5	139.5	77.7	55.1	30.3	31.6	61.9	61.0	33.3	121.5	122.5
UK, England/Wales	607.5	116.7	80.8	52.5	44.1	23.6	67.8	36.5	16.4	86.3	109.3
UK, Scotland	692.7	171.0	115.8	62.3	51.3	19.8	71.1	33.6	20.6	112.5	105.4

Abbreviations used: GN: glomerulonephritis/sclerosis; PN: pyelonephritis; PKD: polycystic kidneys, adult type; DM: diabetes mellitus; HT: hypertension; RVD: renal vascular disease; Misc: miscellaneous; Unkn: unknown
When cells are left empty, the data are unavailable
Categories may not add up to total or to 100% because of missing values

A4 PREVALENT PATIENTS ON RRT IN 2002 (residents only)

Table A.4.6

Prevalence counts

prevalent patients on December 31, by established therapy

	Total	Haemodialysis					Peritoneal dialysis				Transplant				Unkn	Missing	
		Hospital/ centre	Home	HD, type unkn	HF	HDF	Total HD/ HF/HDF	APD	CAPD	PD, type unkn	Total PD	Living	Cadaver	Tx, type unkn			Total Tx
Austria	6300	2366	9	4	2	524	2905	65	178	0	243	263	2889	0	3152	0	0
Belgium, Dutch-speaking	5279	1840	4	291	1	565	2701	198	101	10	309	27	1459	782	2268	1	0
Denmark	3820	1739	24	0			1763	279	303	0	582	365	1074	24	1463	10	2
Finland	3302	979	40	0		58	1077	113	137	0	250	176	1788	11	1975	0	0
Greece	9253	6778	1	0	36	74	6889	151	604	0	755	808	800	1	1609	0	0
Iceland	126	39	0	0			39	0	1	18	19	50	17	1	68	0	0
Norway	2911	658	2	0			660	0	0	123	123	1031	1083	0	2114	0	14
Spain, Basque country	1850	674	5	0			679	0	289	0	289	0	797	0	797	85	0
Spain, Catalonia	6622	3434	3	0			3437	130	64	0	194	107	2884	0	2991	0	0
Spain, Valencia	4474	2625	1	0			2626	1	200	0	201	0	69	1577	1646	1	0
Sweden	6777	2247	68	0			2315	105	518	137	760	1328	2215	0	3543	159	0
The Netherlands	10618	3463	89	0			3552	510	1010	8	1528	1243	4274	16	5533	5	0
UK, England/Wales	22697	8099	239	3	74	1	8416	761	2601	16	3378	708	7370	1337	9415	1382	40
UK, Scotland	3523	1356	42	0			1398	160	244	0	404	254	1318	49	1621	100	0

*Abbreviations used: HD: haemodialysis; Unkn: unknown; HF: haemofiltration; HDF: haemodiafiltration; APD: automated peritoneal dialysis; CAPD: continuous ambulatory peritoneal dialysis; PD: peritoneal dialysis; Tx: transplant
When cells are left empty, the data are unavailable
Categories may not add up to total or to 100% because of missing values*

A4 PREVALENT PATIENTS ON RRT IN 2002 (residents only)

Table A.4.7
Prevalence per million population, unadjusted
prevalent patients on December 31, by established therapy

	Total	Haemodialysis					Peritoneal dialysis					Transplant				Unkn	Missing	
		Hospital/ centre		Home	HD, type unkn	HF	HDF	Total HD/ HF/HDF	APD	CAPD	PD, type unkn	Total PD	Living	Cadaver	Tx, type unkn			Total Tx
		Pmp	Pmp	Pmp	Pmp	Pmp	Pmp	Pmp	Pmp	Pmp	Pmp	Pmp	Pmp	Pmp	Pmp			Pmp
Austria	781.2	293.4	1.1	0.5	0.2	65.0	360.2	8.1	22.1	0	30.1	32.6	358.2	0	390.8	0	0	
Belgium, Dutch-speaking	882.2	307.5	0.7	48.6	0.2	94.4	451.4	33.1	16.9	1.7	51.6	4.5	243.8	130.7	379.0	0.2	0	
Denmark	710.7	323.5	4.5	0			328.0	51.9	56.4	0	108.3	67.9	199.8	4.5	272.2	1.9	0.4	
Finland	635.6	188.5	7.7	0		11.2	207.3	21.8	26.4	0	48.1	33.9	344.2	2.1	380.2	0	0	
Greece	840.9	616.0	0.1	0	3.3	6.7	626.1	13.7	54.9	0	68.6	73.4	72.7	0.1	146.2	0	0	
Iceland	438.2	135.6	0	0			135.6	0	3.5	62.6	66.1	173.9	59.1	3.5	236.5	0	0	
Norway	641.4	145.0	0.4	0			145.4	0	0	27.1	27.1	227.2	238.6	0	465.8	0	3.1	
Spain, Basque country	893.4	325.5	2.4	0			327.9	0	139.6	0	139.6	0	384.9	0	384.9	41.0	0	
Spain, Catalonia	1018	527.8	0.5	0			528.2	20.0	9.8	0	29.8	16.4	443.3	0	459.7	0	0	
Spain, Valencia	1081	634.2	0.2	0			634.4	0.2	48.3	0	48.6	0	16.7	381.0	397.7	0.2	0	
Sweden	759.3	251.8	7.6	0			259.4	11.8	58.0	15.4	85.2	148.8	248.2	0	397.0	17.8	0	
The Netherlands	657.5	214.4	5.5	0			220.0	31.6	62.5	0.5	94.6	77.0	264.7	1.0	342.6	0.3	0	
UK, England/Wales	601.0	214.4	6.3	0.1	2.0	0	222.8	20.1	68.9	0.4	89.4	18.7	195.1	35.4	249.3	36.6	1.1	
UK, Scotland	697.0	268.3	8.3	0			276.6	31.7	48.3	0	79.9	50.2	260.7	9.7	320.7	19.8	0	

Abbreviations used: HD: haemodialysis; Unkn: unknown; HF: haemofiltration; HDF: haemodiafiltration; APD: automated peritoneal dialysis; CAPD: continuous ambulatory peritoneal dialysis; PD: peritoneal dialysis; Tx: transplant
When cells are left empty, the data are unavailable
Categories may not add up to total or to 100% because of missing values

A4 PREVALENT PATIENTS ON RRT IN 2002 (residents only)

Table A.4.8

Prevalence per million population, adjusted
prevalent patients on December 31, by established therapy, adjusted for age and gender

	Total	Haemodialysis						Peritoneal dialysis				Transplant				Unkn	Missing	
		Hospital/ centre		Home	HD, type unkn	HF	HDF	Total HD/ HF/HDF	APD	CAPD	PD, type unkn	Total PD	Living	Cadaver	Tx, type unkn			Total Tx
		Pmp	Pmp	Pmp	Pmp	Pmp	Pmp	Pmp	Pmp	Pmp	Pmp	Pmp	Pmp	Pmp	Pmp			Pmp
Austria	766.3	291.0	1.0	0.4	0.3	64.2	356.9	7.9	21.6	0	29.4	32.5	347.4	0	380.0	0	0	
Belgium, Dutch-speaking	830.0	286.7	0.6	45.0	0.2	87.7	420.2	31.9	15.7	1.7	49.3	4.7	233.1	122.6	360.4	0.1	0	
Denmark	710.8	331.2	4.2	0			335.3	52.5	56.2	0	108.8	68.2	191.8	4.4	264.5	1.9	0.3	
Finland	616.2	188.5	7.4	0		11.0	207.0	21.4	25.8	0	47.2	32.3	327.7	2.0	362.0	0	0	
Greece	803.7	585.9	0.1	0	3.4	6.4	595.7	13.0	51.3	0	64.3	72.5	71.2	0.1	143.7	0	0	
Iceland	497.0	158.9	0	0			158.9	0	4.1	76.4	80.5	187.6	66.7	3.2	257.6	0	0	
Norway	658.8	147.7	0.4	0			148.1	0	0	26.7	26.7	233.6	247.3	0	480.8	0	3.2	
Spain, Basque country	822.3	294.6	2.2	0			296.8	0	132.6	0	132.6	0	355.3	0	355.3	37.6	0	
Spain, Catalonia	984.6	505.6	0.4	0			506.0	19.3	9.8	0	29.1	15.8	433.7	0	449.4	0	0	
Spain, Valencia	1082	634.4	0.3	0			634.7	0.3	46.5	0	46.8	0	16.4	383.8	400.2	0.2	0	
Sweden	734.1	237.3	7.4	0			244.7	11.6	55.3	15.1	82.0	149.0	240.9	0	389.9	17.5	0	
The Netherlands	672.5	231.0	5.2	0			236.2	32.2	64.5	0.5	97.2	75.4	262.4	1.0	338.8	0.3	0	
UK, England/Wales	607.5	217.5	6.3	0.1	2.0	0	225.9	20.7	69.9	0.4	91.0	19.1	196.1	35.7	250.9	36.9	1.1	
UK, Scotland	690.0	266.4	7.9	0			274.3	30.6	47.6	0	78.2	50.7	257.6	9.5	317.8	19.8	0	

Abbreviations used: HD: haemodialysis; Unkn: unknown; HF: haemofiltration; HDF: haemodiafiltration; APD: automated peritoneal dialysis; CAPD: continuous ambulatory peritoneal dialysis; PD: peritoneal dialysis; Tx: transplant
 When cells are left empty, the data are unavailable
 Categories may not add up to total or to 100% because of missing values

Table A.4.9
Percentage of established therapy, unadjusted
prevalent patients on December 31

	Total	Haemodialysis					Peritoneal dialysis				Transplant			Unkn	Missing		
		Hospital/ centre	Home	HD, type unkn	HF	HDF	Total HD/ HF/HDF	APD	CAPD	PD, type unkn	Total PD	Living	Cadaver			Tx, type unkn	Total Tx
	%	%	%	%	%	%	%	%	%	%	%	%	%	%	%	%	%
Austria	100	38	0	0	0	8	46	1	3	0	4	4	46	0	50	0	0
Belgium, Dutch-speaking	100	35	0	6	0	11	51	4	2	0	6	1	28	15	43	0	0
Denmark	100	46	1	0			46	7	8	0	15	10	28	1	38	0	0
Finland	100	30	1	0		2	33	3	4	0	8	5	54	0	60	0	0
Greece	100	73	0	0	0	1	74	2	7	0	8	9	9	0	17	0	0
Iceland	100	31	0	0			31	0	1	14	15	40	13	1	54	0	0
Norway	100	23	0	0			23	0	0	4	4	35	37	0	73	0	0
Spain, Basque country	100	36	0	0			37	0	16	0	16	0	43	0	43	5	0
Spain, Catalonia	100	52	0	0			52	2	1	0	3	2	44	0	45	0	0
Spain, Valencia	100	59	0	0			59	0	4	0	4	0	2	35	37	0	0
Sweden	100	33	1	0			34	2	8	2	11	20	33	0	52	2	0
The Netherlands	100	33	1	0			33	5	10	0	14	12	40	0	52	0	0
UK, England/Wales	100	36	1	0	0	0	37	3	11	0	15	3	32	6	41	6	0
UK, Scotland	100	38	1	0			40	5	7	0	11	7	37	1	46	3	0

Abbreviations used: HD: haemodialysis; Unkn: unknown; HF: haemofiltration; HDF: haemodiafiltration; APD: automated peritoneal dialysis; CAPD: continuous ambulatory peritoneal dialysis; PD: peritoneal dialysis; Tx: transplant
When cells are left empty, the data are unavailable
Categories may not add up to total or to 100% because of missing values

Table A.4.10
Percentage of established therapy, unadjusted
prevalent patients on December 31, by age, gender and primary diagnosis

	Total				0-19				20-44				45-64				65-74				75+				Men				Women				DM				Non DM			
	HD	PD	TX	Oth	HD	PD	TX	Oth	HD	PD	TX	Oth	HD	PD	TX	Oth	HD	PD	TX	Oth	HD	PD	TX	Oth	HD	PD	TX	Oth	HD	PD	TX	Oth	HD	PD	TX	Oth	HD	PD	TX	Oth
	%	%	%	%	%	%	%	%	%	%	%	%	%	%	%	%	%	%	%	%	%	%	%	%	%	%	%	%	%	%	%	%	%	%	%	%	%	%	%	%
Austria	38	4	50	8	15	8	74	2	19	4	69	8	32	4	55	9	51	3	37	8	72	3	15	9	36	4	51	9	40	4	49	7	54	5	31	10	34	4	55	8
Belgium, Dutch-speaking	40	6	43	11	24	18	53	6	17	9	69	6	26	6	60	8	48	5	33	14	75	4	6	15	38	6	45	11	43	6	40	11	53	6	26	15	38	6	46	10
Denmark	46	15	38	0	15	11	73	0	29	11	59	0	39	16	44	0	64	20	16	0	83	14	3	0	46	14	39	0	46	17	37	0	52	18	30	0	45	15	40	0
Finland	31	8	60	2	5	10	85	0	20	7	73	1	25	7	67	1	45	9	43	3	74	11	12	3	31	8	60	2	31	7	60	2	36	12	50	3	29	6	63	1
Greece	74	10	18	1	24	17	59	0	50	5	44	1	69	8	22	1	85	10	5	1	90	9	0	1	73	7	18	1	74	9	16	1	82	14	3	1	72	7	20	1
Iceland	31	15	54	0	0	0	100	0	22	7	71	0	15	15	69	0	57	24	19	0	71	29	0	0	26	17	57	0	36	13	51	0	56	0	44	0	29	16	55	0
Norway	23	4	73	0	3	3	92	2	13	3	83	1	17	3	80	0	32	4	64	0	55	12	34	0	24	4	72	0	20	5	74	1	31	5	65	0	22	4	73	1
Spain, Basque country	38	17	43	5	5	58	34	3	23	14	56	7	29	13	53	5	46	16	34	4	75	18	5	1	38	16	41	5	34	15	47	4	54	28	16	2	35	15	45	5
Spain, Catalonia	52	3	45	0	12	2	86	0	31	4	65	0	38	3	58	0	62	3	36	0	92	2	6	0	51	3	46	0	53	3	44	0	73	6	21	0	49	3	48	0
Spain, Valencia	59	4	37	0	7	5	88	0	30	9	61	0	45	3	52	0	79	3	17	0	96	4	1	0	58	4	38	0	60	5	35	0	81	9	11	0	57	4	39	0
Sweden	34	11	52	2	6	2	91	1	17	7	73	3	25	11	61	3	47	15	37	2	75	15	10	0	34	12	52	3	35	10	53	2	41	16	41	2	33	10	55	2
The Netherlands	33	14	52	0	10	14	75	0	20	15	65	0	26	14	59	0	47	15	38	0	78	11	10	0	33	15	53	0	34	14	52	0	50	20	30	0	32	14	54	0
UK, England/Wales	37	15	41	7	19	8	65	8	22	12	56	9	30	15	48	8	51	18	26	5	73	17	8	2	37	14	41	7	36	16	42	6	48	23	24	5	35	14	44	7
UK, Scotland	40	11	46	3	7	25	64	4	24	10	62	4	34	11	52	3	57	12	28	3	79	12	7	3	39	10	48	3	40	13	43	3	51	17	31	1	38	11	48	3

Categories may not add up to total or to 100% because of missing values

Table A.4.11
Renal transplants performed in 2002, number and percentage
by donor type

	Total		Living								Cadaver		Donor type unkn	
	N	%	Related		Unrelated		Type unkn		All		N	%	N	%
			N	%	N	%	N	%	N	%				
Austria	411	100	27	7	15	4	0	0	42	10	369	90	0	0
Belgium, Dutch-speaking	172	100	2	1	1	1	0	0	3	2	167	97	2	1
Denmark	171	100	33	19	6	4	0	0	39	23	132	77	0	0
Finland	170	100	3	2	0	0	0	0	3	2	167	98	0	0
Greece	213	100	87	41	2	1	0	0	89	42	124	58	0	0
Iceland†	0	0	0	0	0	0	0	0	0	0	0	0	0	0
Norway	213	100	73	34	25	12	0	0	98	46	115	54	0	0
Spain, Basque country	12	100	0	0	0	0	0	0	0	0	12	100	0	0
Spain, Catalonia	373	100	18	5	0	0	0	0	18	5	355	95	0	0
Spain, Valencia	195	100	0	0	0	0	0	0	0	0	70	36	125	64
Sweden	309	100	77	25	38	12	0	0	115	37	194	63	0	0
The Netherlands	588	100	0	0	0	0	201	34	201	34	377	64	10	2
UK, England/Wales‡	1710	100	0	0	0	0	372	22	372	22	1338	78	0	0
UK, Scotland	138	100	27	20	7	5	0	0	34	25	103	75	1	1

When cells are left empty, the data are unavailable

Categories may not add up to total or to 100% because of missing values

† Patients are transplanted abroad

‡ Data derived from UK transplant

Table A.5.1

90-day, one-, two- and five-year survival probabilities (cohort 1993-1997): Incident RRT patients, unadjusted
from day 1 to 90 days, one, two and five years, by age, gender and primary diagnosis

	90 day Survival (95% CI)	1 year Survival (95% CI)	2 year Survival (95% CI)	5 year Survival (95% CI)
ALL COUNTRIES				
0-19	99.2 (98.4 - 99.6)	96.6 (95.3 - 97.6)	94.6 (93.1 - 95.9)	92.1 (90.3 - 93.6)
20-44	98.7 (98.4 - 98.9)	95.4 (94.9 - 95.8)	91.5 (90.8 - 92.0)	83.1 (82.4 - 83.9)
45-64	95.9 (95.6 - 96.2)	87.3 (86.9 - 87.8)	77.6 (77.1 - 78.1)	56.3 (55.9 - 56.8)
65-74	91.6 (91.1 - 92.0)	75.8 (75.2 - 76.4)	59.8 (59.3 - 60.3)	27.9 (27.7 - 28.2)
75+	86.0 (85.2 - 86.7)	65.0 (64.2 - 65.7)	46.6 (46.1 - 47.2)	14.8 (14.7 - 15.0)
Male	93.7 (93.4 - 93.9)	82.1 (81.7 - 82.5)	70.3 (69.9 - 70.7)	46.7 (46.4 - 47.0)
Female	93.7 (93.4 - 94.0)	82.0 (81.5 - 82.5)	70.4 (69.9 - 70.8)	47.2 (46.8 - 47.5)
Diabetes	93.5 (93.0 - 94.0)	77.8 (77.1 - 78.5)	60.0 (59.3 - 60.6)	30.1 (29.8 - 30.4)
Hypertension / renal vascular disease	91.3 (90.7 - 91.9)	77.3 (76.5 - 78.1)	63.0 (62.2 - 63.7)	33.9 (33.5 - 34.3)
Glomerulonephritis	96.4 (96.0 - 96.8)	90.2 (89.6 - 90.8)	83.1 (82.4 - 83.8)	66.4 (65.6 - 67.1)
Other cause	93.5 (93.2 - 93.9)	82.5 (82.1 - 82.9)	72.4 (72.0 - 72.9)	51.0 (50.6 - 51.3)
All	93.7 (93.5 - 93.9)	82.1 (81.8 - 82.4)	70.3 (70.0 - 70.6)	46.9 (46.6 - 47.1)

Table A.5.2

90-day, one-, two- and five-year survival probabilities (cohort 1993-1997): Incident RRT patients, adjusted from day 1 to 90 days, one, two and five years, adjusted for age, gender and primary diagnosis

	90 day Survival (95% CI)	1 year Survival (95% CI)	2 year Survival (95% CI)	5 year Survival (95% CI)
ALL COUNTRIES				
0-19	99.1 (98.5 - 99.8)	96.0 (94.7 - 97.4)	93.7 (92.1 - 95.5)	90.8 (88.8 - 92.8)
20-44	98.7 (98.4 - 98.9)	95.3 (94.8 - 95.8)	91.3 (90.6 - 91.9)	82.6 (81.7 - 83.5)
45-64	96.1 (95.8 - 96.4)	87.7 (87.2 - 88.2)	78.2 (77.5 - 78.8)	56.5 (55.7 - 57.3)
65-74	91.9 (91.5 - 92.4)	76.8 (76.1 - 77.6)	61.1 (60.2 - 62.0)	28.6 (27.8 - 29.4)
75+	86.1 (85.2 - 86.9)	65.3 (64.1 - 66.4)	46.9 (45.7 - 48.2)	14.5 (13.7 - 15.5)
Male	95.1 (94.9 - 95.4)	85.7 (85.3 - 86.1)	75.0 (74.5 - 75.6)	49.0 (48.3 - 49.7)
Female	95.4 (95.2 - 95.7)	86.4 (85.9 - 86.9)	76.3 (75.7 - 76.9)	51.5 (50.7 - 52.3)
Diabetes	94.7 (94.3 - 95.1)	81.1 (80.3 - 81.9)	64.2 (63.2 - 65.2)	31.0 (29.9 - 32.1)
Hypertension / renal vascular disease	94.9 (94.5 - 95.3)	85.9 (85.2 - 86.6)	75.6 (74.7 - 76.5)	48.3 (47.1 - 49.6)
Glomerulonephritis	96.5 (96.1 - 96.9)	90.1 (89.4 - 90.8)	82.3 (81.4 - 83.3)	61.8 (60.6 - 63.1)
Other cause	94.9 (94.7 - 95.2)	85.9 (85.4 - 86.3)	76.8 (76.2 - 77.4)	54.1 (53.3 - 54.8)
All	95.3 (95.1 - 95.4)	86.0 (85.6 - 86.3)	75.5 (75.1 - 76.0)	50.0 (49.5 - 50.6)

Table A.5.3

One-, two- and five-year survival probabilities (cohort 1993-1997): Incident RRT patients, unadjusted
from day 91 to one, two and five years + 90 days, by age, gender and primary diagnosis

	1 year Survival (95% CI)	2 year Survival (95% CI)	5 year Survival (95% CI)
ALL COUNTRIES			
0-19	96.4 (95.0 - 97.5)	94.8 (93.1 - 96.1)	92.1 (90.2 - 93.7)
20-44	95.5 (95.0 - 95.9)	91.6 (91.0 - 92.2)	83.0 (82.2 - 83.7)
45-64	88.2 (87.7 - 88.6)	78.6 (78.1 - 79.1)	56.6 (56.2 - 57.1)
65-74	78.3 (77.7 - 78.9)	61.3 (60.8 - 61.9)	28.4 (28.2 - 28.7)
75+	69.8 (69.0 - 70.7)	49.8 (49.1 - 50.4)	15.3 (15.1 - 15.4)
Male	84.1 (83.7 - 84.5)	72.0 (71.6 - 72.4)	47.5 (47.2 - 47.8)
Female	84.2 (83.7 - 84.6)	72.2 (71.7 - 72.7)	48.2 (47.8 - 48.6)
Diabetes	77.9 (77.1 - 78.6)	60.1 (59.5 - 60.8)	29.6 (29.3 - 29.9)
Hypertension / renal vascular disease	80.4 (79.6 - 81.2)	65.2 (64.4 - 66.0)	35.3 (34.9 - 35.8)
Glomerulonephritis	91.5 (90.8 - 92.1)	84.5 (83.7 - 85.2)	67.0 (66.2 - 67.8)
Other cause	85.2 (84.8 - 85.7)	74.7 (74.2 - 75.2)	52.3 (51.9 - 52.6)
All	84.1 (83.8 - 84.4)	72.1 (71.8 - 72.4)	47.8 (47.5 - 48.0)

Table A.5.4

One-, two- and five-year survival probabilities (cohort 1993-1997): Incident RRT patients, adjusted from day 91 to one, two and five years + 90 days, adjusted for age, gender and primary diagnosis

	1 year Survival (95% CI)	2 year Survival (95% CI)	5 year Survival (95% CI)
ALL COUNTRIES			
0-19	95.7 (94.2 - 97.3)	93.8 (92.0 - 95.7)	90.7 (88.6 - 92.9)
20-44	95.4 (94.9 - 95.9)	91.5 (90.8 - 92.2)	82.7 (81.8 - 83.6)
45-64	88.6 (88.1 - 89.1)	79.2 (78.5 - 79.9)	57.3 (56.5 - 58.1)
65-74	79.2 (78.5 - 80.0)	62.6 (61.7 - 63.5)	29.4 (28.6 - 30.3)
75+	70.1 (68.8 - 71.3)	49.8 (48.5 - 51.2)	15.1 (14.1 - 16.1)
Male	87.1 (86.7 - 87.5)	76.1 (75.6 - 76.7)	49.6 (48.9 - 50.3)
Female	87.9 (87.4 - 88.3)	77.4 (76.8 - 78.1)	52.2 (51.4 - 53.1)
Diabetes	80.9 (80.0 - 81.7)	63.9 (62.9 - 65.0)	30.3 (29.2 - 31.4)
Hypertension / renal vascular disease	87.6 (87.0 - 88.3)	76.6 (75.7 - 77.5)	49.2 (48.0 - 50.5)
Glomerulonephritis	91.2 (90.5 - 91.9)	83.5 (82.6 - 84.4)	62.5 (61.2 - 63.8)
Other cause	87.9 (87.5 - 88.3)	78.4 (77.8 - 79.0)	55.1 (54.4 - 55.9)
All	87.4 (87.1 - 87.7)	76.7 (76.2 - 77.1)	50.7 (50.1 - 51.2)

Table A.5.5
90-day, one- and two-year survival probabilities (cohort 1996-2000): Incident RRT patients, unadjusted
from day 1 to 90 days, one and two years, by age, gender and primary diagnosis

	90 day Survival (95% CI)	1 year Survival (95% CI)	2 year Survival (95% CI)
ALL COUNTRIES			
0-19	99.3 (98.5 - 99.6)	96.8 (95.5 - 97.7)	95.8 (94.4 - 96.9)
20-44	98.5 (98.3 - 98.8)	95.1 (94.7 - 95.5)	91.6 (91.1 - 92.2)
45-64	96.0 (95.7 - 96.3)	87.5 (87.1 - 87.9)	78.4 (77.9 - 78.9)
65-74	90.9 (90.5 - 91.3)	75.7 (75.2 - 76.2)	60.8 (60.3 - 61.2)
75+	86.7 (86.1 - 87.2)	66.4 (65.8 - 67.0)	48.4 (47.9 - 48.8)
Male	93.3 (93.0 - 93.5)	81.5 (81.2 - 81.8)	69.8 (69.4 - 70.1)
Female	92.9 (92.6 - 93.2)	80.8 (80.3 - 81.2)	69.3 (68.9 - 69.7)
Diabetes	93.5 (93.1 - 93.9)	79.1 (78.5 - 79.6)	62.5 (61.9 - 63.1)
Hypertension / renal vascular disease	91.3 (90.8 - 91.9)	76.6 (75.9 - 77.2)	62.7 (62.1 - 63.4)
Glomerulonephritis	96.3 (95.9 - 96.7)	90.5 (89.9 - 91.0)	83.7 (83.0 - 84.3)
Other cause	92.6 (92.3 - 92.8)	80.9 (80.5 - 81.3)	70.6 (70.3 - 71.0)
All	93.1 (92.9 - 93.3)	81.2 (80.9 - 81.5)	69.6 (69.3 - 69.9)

Table A.5.6

90-day, one- and two-year survival probabilities (cohort 1996-2000): Incident RRT patients, adjusted from day 1 to 90 days, one and two years, adjusted for age, gender and primary diagnosis

	90 day Survival (95% CI)	1 year Survival (95% CI)	2 year Survival (95% CI)
ALL COUNTRIES			
0-19	99.2 (98.6 - 99.8)	96.4 (95.2 - 97.7)	95.4 (94.0 - 96.8)
20-44	98.5 (98.2 - 98.8)	95.0 (94.5 - 95.5)	91.5 (90.8 - 92.1)
45-64	96.1 (95.8 - 96.4)	87.9 (87.5 - 88.4)	79.0 (78.4 - 79.6)
65-74	91.3 (90.9 - 91.7)	76.8 (76.2 - 77.5)	62.3 (61.5 - 63.0)
75+	86.8 (86.2 - 87.5)	66.9 (66.0 - 67.8)	49.0 (48.0 - 49.9)
Male	95.0 (94.8 - 95.2)	85.9 (85.5 - 86.2)	75.8 (75.3 - 76.3)
Female	95.1 (94.8 - 95.3)	86.0 (85.6 - 86.5)	76.6 (76.0 - 77.1)
Diabetes	94.8 (94.5 - 95.2)	82.8 (82.1 - 83.4)	67.8 (66.9 - 68.6)
Hypertension / renal vascular disease	95.0 (94.7 - 95.4)	85.8 (85.2 - 86.4)	76.0 (75.3 - 76.8)
Glomerulonephritis	96.5 (96.1 - 96.9)	90.7 (90.1 - 91.4)	83.7 (82.8 - 84.5)
Other cause	94.4 (94.2 - 94.7)	85.2 (84.8 - 85.6)	76.3 (75.8 - 76.8)
All	95.0 (94.9 - 95.2)	85.9 (85.7 - 86.2)	76.1 (75.7 - 76.5)

Table A.5.7
One- and two-year survival probabilities (cohort 1996-2000): Incident RRT patients, unadjusted
from day 91 to one and two years + 90 days, by age, gender and primary diagnosis

	1 year Survival (95% CI)	2 year Survival (95% CI)
ALL COUNTRIES		
0-19	97.2 (95.9 - 98.1)	96.2 (94.7 - 97.3)
20-44	95.6 (95.1 - 96.0)	91.9 (91.3 - 92.4)
45-64	88.5 (88.1 - 88.9)	79.4 (78.9 - 79.9)
65-74	79.2 (78.6 - 79.7)	63.0 (62.5 - 63.5)
75+	71.1 (70.4 - 71.8)	51.3 (50.8 - 51.8)
Male	84.0 (83.7 - 84.3)	71.7 (71.3 - 72.0)
Female	83.6 (83.1 - 84.0)	71.7 (71.2 - 72.1)
Diabetes	79.7 (79.1 - 80.3)	62.8 (62.2 - 63.4)
Hypertension / renal vascular disease	79.9 (79.2 - 80.6)	64.9 (64.2 - 65.6)
Glomerulonephritis	92.1 (91.5 - 92.6)	85.0 (84.3 - 85.7)
Other cause	84.3 (84.0 - 84.7)	73.6 (73.1 - 74.0)
All	83.8 (83.6 - 84.1)	71.7 (71.4 - 72.0)

Table A.5.8
One- and two-year survival probabilities (cohort 1996-2000): Incident RRT patients, adjusted
from day 91 to one and two years + 90 days, adjusted for age, gender and primary diagnosis

	1 year Survival (95% CI)	2 year Survival (95% CI)
ALL COUNTRIES		
0-19	96.8 (95.5 - 98.0)	95.7 (94.2 - 97.2)
20-44	95.5 (95.1 - 96.0)	91.8 (91.2 - 92.4)
45-64	88.9 (88.5 - 89.4)	80.2 (79.6 - 80.8)
65-74	80.2 (79.6 - 80.9)	64.8 (64.1 - 65.6)
75+	71.5 (70.6 - 72.4)	52.2 (51.2 - 53.3)
Male	87.6 (87.3 - 88.0)	77.2 (76.7 - 77.7)
Female	87.9 (87.5 - 88.3)	78.3 (77.7 - 78.8)
Diabetes	83.0 (82.4 - 83.7)	68.0 (67.1 - 68.8)
Hypertension / renal vascular disease	87.7 (87.1 - 88.2)	77.3 (76.5 - 78.1)
Glomerulonephritis	92.1 (91.5 - 92.7)	84.9 (84.1 - 85.7)
Other cause	87.7 (87.3 - 88.0)	78.4 (77.9 - 78.9)
All	87.8 (87.5 - 88.0)	77.6 (77.3 - 78.0)

Table A.5.9

90-day, one-, two- and five-year survival probabilities (cohort 1993-1997): Incident dialysis patients, unadjusted
from day 1 to 90 days, one, two and five years, by age, gender and primary diagnosis

	90 day Survival (95% CI)	1 year Survival (95% CI)	2 year Survival (95% CI)	5 year Survival (95% CI)
ALL COUNTRIES				
0-19	99.1 (98.1 - 99.6)	96.6 (95.0 - 97.7)	93.8 (91.5 - 95.5)	87.7 (84.0 - 90.6)
20-44	98.7 (98.4 - 98.9)	95.0 (94.4 - 95.5)	89.8 (89.0 - 90.5)	74.3 (73.1 - 75.4)
45-64	95.9 (95.6 - 96.2)	87.0 (86.5 - 87.5)	76.0 (75.4 - 76.5)	48.2 (47.7 - 48.7)
65-74	91.6 (91.2 - 92.1)	75.8 (75.3 - 76.4)	59.6 (59.1 - 60.1)	26.8 (26.5 - 27.0)
75+	86.0 (85.2 - 86.7)	65.1 (64.3 - 65.8)	46.8 (46.2 - 47.4)	14.8 (14.7 - 15.0)
Male	93.6 (93.3 - 93.8)	81.4 (81.0 - 81.8)	67.9 (67.4 - 68.3)	36.8 (36.5 - 37.0)
Female	93.6 (93.2 - 93.9)	81.4 (80.9 - 81.9)	68.3 (67.8 - 68.8)	38.5 (38.2 - 38.9)
Diabetes	93.5 (92.9 - 93.9)	77.3 (76.6 - 78.1)	58.0 (57.3 - 58.6)	23.2 (22.9 - 23.4)
Hypertension / renal vascular disease	91.3 (90.7 - 91.9)	77.2 (76.3 - 77.9)	62.1 (61.3 - 62.8)	29.4 (29.0 - 29.7)
Glomerulonephritis	96.4 (95.9 - 96.8)	89.6 (88.9 - 90.2)	80.6 (79.8 - 81.4)	54.4 (53.6 - 55.2)
Other cause	93.4 (93.1 - 93.7)	81.8 (81.3 - 82.2)	70.3 (69.8 - 70.8)	41.9 (41.5 - 42.2)
All	93.6 (93.3 - 93.8)	81.4 (81.1 - 81.7)	68.0 (67.7 - 68.4)	37.5 (37.3 - 37.7)

Table A.5.10

90-day, one-, two- and five-year survival probabilities (cohort 1993-1997): Incident dialysis patients, adjusted from day 1 to 90 days, one, two and five years, adjusted for age, gender and primary diagnosis

	90 day Survival (95% CI)	1 year Survival (95% CI)	2 year Survival (95% CI)	5 year Survival (95% CI)
ALL COUNTRIES				
0-19	98.9 (98.2 - 99.7)	96.1 (94.4 - 97.7)	92.9 (90.5 - 95.4)	85.2 (80.6 - 90.0)
20-44	98.6 (98.4 - 98.9)	94.9 (94.3 - 95.4)	89.5 (88.7 - 90.4)	71.8 (70.1 - 73.6)
45-64	96.0 (95.7 - 96.3)	87.4 (86.9 - 88.0)	76.7 (76.0 - 77.4)	47.6 (46.7 - 48.6)
65-74	91.9 (91.4 - 92.3)	76.7 (75.9 - 77.4)	60.7 (59.8 - 61.6)	27.0 (26.2 - 27.9)
75+	86.0 (85.2 - 86.9)	65.1 (64.0 - 66.3)	46.8 (45.6 - 48.1)	14.4 (13.5 - 15.3)
Male	94.6 (94.3 - 94.9)	84.2 (83.8 - 84.7)	72.3 (71.7 - 72.9)	41.6 (40.8 - 42.4)
Female	94.9 (94.6 - 95.2)	84.9 (84.4 - 85.5)	73.7 (73.0 - 74.4)	44.8 (43.9 - 45.8)
Diabetes	94.3 (93.8 - 94.7)	79.7 (78.8 - 80.5)	61.6 (60.5 - 62.7)	25.8 (24.7 - 26.9)
Hypertension / renal vascular disease	94.2 (93.7 - 94.6)	84.1 (83.3 - 84.8)	72.4 (71.4 - 73.5)	41.7 (40.4 - 43.0)
Glomerulonephritis	96.3 (95.8 - 96.7)	89.4 (88.6 - 90.2)	80.5 (79.5 - 81.6)	53.3 (51.8 - 54.9)
Other cause	94.4 (94.1 - 94.7)	84.4 (83.9 - 84.9)	74.3 (73.6 - 74.9)	47.0 (46.2 - 47.9)
All	94.7 (94.5 - 94.9)	84.5 (84.2 - 84.9)	72.9 (72.4 - 73.3)	42.9 (42.3 - 43.5)

Table A.5.11

One-, two- and five-year survival probabilities (cohort 1993-1997): Incident dialysis patients, unadjusted
from day 91 to one, two and five years + 90 days, by age, gender and primary diagnosis

	1 year Survival (95% CI)	2 year Survival (95% CI)	5 year Survival (95% CI)
ALL COUNTRIES			
0-19	96.5 (94.8 - 97.7)	94.2 (91.8 - 95.9)	88.5 (84.6 - 91.5)
20-44	95.0 (94.4 - 95.5)	89.8 (89.0 - 90.5)	73.4 (72.2 - 74.6)
45-64	87.7 (87.2 - 88.2)	76.7 (76.1 - 77.2)	47.7 (47.2 - 48.2)
65-74	78.2 (77.6 - 78.8)	61.1 (60.5 - 61.6)	27.1 (26.8 - 27.3)
75+	70.0 (69.1 - 70.8)	49.9 (49.2 - 50.6)	15.3 (15.1 - 15.4)
Male	83.3 (82.9 - 83.7)	69.2 (68.7 - 69.6)	36.8 (36.5 - 37.1)
Female	83.4 (82.9 - 83.9)	69.7 (69.2 - 70.3)	38.8 (38.5 - 39.2)
Diabetes	77.3 (76.5 - 78.0)	57.8 (57.1 - 58.4)	22.2 (21.9 - 22.4)
Hypertension / renal vascular disease	80.1 (79.2 - 80.9)	64.0 (63.2 - 64.8)	30.1 (29.7 - 30.5)
Glomerulonephritis	90.7 (90.0 - 91.3)	81.6 (80.7 - 82.4)	54.1 (53.2 - 54.9)
Other cause	84.5 (84.0 - 84.9)	72.3 (71.8 - 72.8)	42.4 (42.1 - 42.8)
All	83.3 (83.0 - 83.7)	69.4 (69.1 - 69.8)	37.6 (37.4 - 37.8)

Table A.5.12

One-, two- and five-year survival probabilities (cohort 1993-1997): Incident dialysis patients, adjusted from day 91 to one, two and five years + 90 days, adjusted for age, gender and primary diagnosis

	1 year Survival (95% CI)	2 year Survival (95% CI)	5 year Survival (95% CI)
ALL COUNTRIES			
0-19	95.7 (93.9 - 97.6)	93.0 (90.4 - 95.6)	85.9 (81.3 - 90.8)
20-44	94.9 (94.3 - 95.5)	89.5 (88.6 - 90.4)	71.0 (69.2 - 72.9)
45-64	88.2 (87.6 - 88.7)	77.4 (76.7 - 78.1)	47.7 (46.7 - 48.7)
65-74	79.0 (78.2 - 79.7)	62.1 (61.2 - 63.0)	27.6 (26.8 - 28.5)
75+	70.0 (68.8 - 71.2)	49.7 (48.4 - 51.1)	14.9 (14.0 - 15.9)
Male	85.7 (85.2 - 86.1)	73.2 (72.6 - 73.8)	41.6 (40.8 - 42.4)
Female	86.4 (85.9 - 86.9)	74.6 (73.9 - 75.3)	45.0 (44.0 - 45.9)
Diabetes	79.3 (78.4 - 80.2)	61.0 (59.9 - 62.2)	24.7 (23.6 - 25.9)
Hypertension / renal vascular disease	85.8 (85.0 - 86.6)	73.3 (72.2 - 74.3)	42.0 (40.6 - 43.4)
Glomerulonephritis	90.5 (89.7 - 91.2)	81.4 (80.4 - 82.5)	53.2 (51.6 - 54.9)
Other cause	86.6 (86.1 - 87.0)	75.8 (75.1 - 76.4)	47.4 (46.5 - 48.3)
All	86.0 (85.6 - 86.3)	73.8 (73.3 - 74.3)	42.9 (42.3 - 43.6)

Table A.5.13

90-day, one- and two-year survival probabilities (cohort 1996-2000): Incident dialysis patients, unadjusted
from day 1 to 90 days, one and two years, by age, gender and primary diagnosis

	90 day Survival (95% CI)	1 year Survival (95% CI)	2 year Survival (95% CI)
ALL COUNTRIES			
0-19	99.1 (98.1 - 99.6)	96.4 (94.7 - 97.6)	95.1 (93.1 - 96.6)
20-44	98.6 (98.3 - 98.8)	94.7 (94.1 - 95.1)	90.1 (89.4 - 90.7)
45-64	95.9 (95.7 - 96.2)	87.3 (86.8 - 87.7)	77.0 (76.5 - 77.5)
65-74	91.1 (90.7 - 91.5)	76.0 (75.5 - 76.5)	60.9 (60.4 - 61.3)
75+	87.0 (86.4 - 87.6)	67.1 (66.5 - 67.7)	49.0 (48.6 - 49.5)
Male	93.3 (93.0 - 93.5)	81.0 (80.7 - 81.4)	67.9 (67.5 - 68.2)
Female	92.9 (92.6 - 93.2)	80.5 (80.1 - 80.9)	67.7 (67.3 - 68.2)
Diabetes	93.5 (93.1 - 93.9)	78.8 (78.2 - 79.4)	61.1 (60.6 - 61.7)
Hypertension / renal vascular disease	91.5 (91.0 - 92.1)	76.8 (76.1 - 77.4)	62.3 (61.7 - 62.9)
Glomerulonephritis	96.3 (95.9 - 96.7)	90.1 (89.4 - 90.7)	81.8 (81.0 - 82.5)
Other cause	92.5 (92.2 - 92.8)	80.4 (80.0 - 80.8)	68.8 (68.4 - 69.2)
All	93.1 (92.9 - 93.3)	80.8 (80.6 - 81.1)	67.8 (67.6 - 68.1)

Table A.5.14

90-day, one- and two-year survival probabilities (cohort 1996-2000): Incident dialysis patients, adjusted from day 1 to 90 days, one and two years, adjusted for age, gender and primary diagnosis

	90 day Survival (95% CI)	1 year Survival (95% CI)	2 year Survival (95% CI)
ALL COUNTRIES			
0-19	99.0 (98.2 - 99.7)	95.9 (94.3 - 97.6)	94.4 (92.3 - 96.5)
20-44	98.5 (98.3 - 98.8)	94.6 (94.0 - 95.1)	89.8 (89.0 - 90.6)
45-64	96.0 (95.8 - 96.3)	87.7 (87.2 - 88.2)	77.7 (77.1 - 78.3)
65-74	91.4 (91.0 - 91.8)	77.0 (76.3 - 77.6)	62.2 (61.4 - 62.9)
75+	87.1 (86.5 - 87.7)	67.4 (66.5 - 68.4)	49.5 (48.5 - 50.5)
Male	94.7 (94.5 - 94.9)	84.9 (84.6 - 85.3)	73.9 (73.4 - 74.4)
Female	94.7 (94.4 - 95.0)	85.1 (84.7 - 85.6)	74.8 (74.2 - 75.4)
Diabetes	94.5 (94.2 - 94.9)	81.9 (81.2 - 82.6)	66.0 (65.2 - 66.9)
Hypertension / renal vascular disease	94.6 (94.2 - 95.0)	84.7 (84.0 - 85.3)	74.0 (73.1 - 74.9)
Glomerulonephritis	96.4 (96.0 - 96.8)	90.3 (89.7 - 91.0)	82.4 (81.5 - 83.3)
Other cause	94.1 (93.8 - 94.3)	84.3 (83.8 - 84.7)	74.4 (73.9 - 75.0)
All	94.7 (94.5 - 94.9)	85.0 (84.7 - 85.3)	74.2 (73.8 - 74.6)

Table A.5.15

One- and two-year survival probabilities (cohort 1996-2000): Incident dialysis patients, unadjusted
from day 91 to one and two years + 90 days, by age, gender and primary diagnosis

	1 year Survival (95% CI)	2 year Survival (95% CI)
ALL COUNTRIES		
0-19	97.0 (95.3 - 98.1)	95.5 (93.3 - 97.0)
20-44	95.0 (94.5 - 95.5)	90.0 (89.2 - 90.7)
45-64	88.1 (87.7 - 88.5)	77.7 (77.2 - 78.3)
65-74	79.2 (78.7 - 79.8)	62.8 (62.3 - 63.3)
75+	71.6 (71.0 - 72.3)	51.9 (51.4 - 52.4)
Male	83.4 (83.0 - 83.7)	69.4 (69.0 - 69.7)
Female	83.1 (82.6 - 83.5)	69.7 (69.3 - 70.2)
Diabetes	79.4 (78.7 - 80.0)	61.3 (60.7 - 61.9)
Hypertension / renal vascular disease	79.9 (79.1 - 80.6)	64.1 (63.3 - 64.8)
Glomerulonephritis	91.5 (90.9 - 92.1)	82.7 (81.9 - 83.5)
Other cause	83.7 (83.3 - 84.1)	71.4 (70.9 - 71.8)
All	83.3 (83.0 - 83.5)	69.5 (69.2 - 69.8)

Table A.5.16

One- and two-year survival probabilities (cohort 1996-2000): Incident dialysis patients, adjusted from day 91 to one and two years + 90 days, adjusted for age, gender and primary diagnosis

	1 year Survival (95% CI)	2 year Survival (95% CI)
ALL COUNTRIES		
0-19	96.6 (95.1 - 98.2)	94.9 (92.8 - 97.1)
20-44	95.0 (94.4 - 95.5)	89.8 (89.0 - 90.6)
45-64	88.6 (88.1 - 89.1)	78.7 (78.1 - 79.4)
65-74	80.2 (79.6 - 80.8)	64.5 (63.8 - 65.3)
75+	71.9 (70.9 - 72.8)	52.6 (51.6 - 53.7)
Male	86.6 (86.3 - 87.0)	75.1 (74.6 - 75.6)
Female	86.9 (86.5 - 87.4)	76.3 (75.7 - 76.9)
Diabetes	82.1 (81.4 - 82.8)	66.1 (65.2 - 67.0)
Hypertension / renal vascular disease	86.5 (85.8 - 87.1)	75.0 (74.1 - 75.9)
Glomerulonephritis	91.7 (91.0 - 92.3)	83.4 (82.5 - 84.4)
Other cause	86.7 (86.3 - 87.1)	76.4 (75.8 - 77.0)
All	86.8 (86.5 - 87.1)	75.6 (75.1 - 76.0)

Table A.5.17

One-, two- and five-year survival probabilities (cohort 1993-1997): First transplant patients (cadaver donor), unadjusted
from day of transplant to one, two and five years, by age, gender and primary diagnosis

	1 year Survival (95% CI)	2 year Survival (95% CI)	5 year Survival (95% CI)
ALL COUNTRIES			
0-19	96.9 (95.2 - 98.0)	96.1 (94.2 - 97.3)	94.2 (92.1 - 95.7)
20-44	96.9 (96.3 - 97.4)	95.4 (94.7 - 96.0)	90.8 (89.9 - 91.7)
45-64	92.6 (91.8 - 93.3)	89.6 (88.7 - 90.4)	78.6 (77.5 - 79.5)
65+	85.0 (82.0 - 87.6)	80.6 (77.5 - 83.3)	61.6 (58.8 - 64.3)
Male	94.2 (93.6 - 94.7)	91.7 (91.0 - 92.3)	82.8 (81.9 - 83.6)
Female	94.4 (93.7 - 95.1)	92.3 (91.5 - 93.1)	85.4 (84.3 - 86.4)
Diabetes	91.4 (89.6 - 92.8)	87.0 (85.1 - 88.7)	75.0 (73.0 - 77.0)
Hypertension / renal vascular disease	93.2 (91.2 - 94.8)	90.3 (88.1 - 92.1)	78.3 (75.8 - 80.7)
Glomerulonephritis	96.2 (95.4 - 96.8)	94.4 (93.5 - 95.2)	87.4 (86.2 - 88.5)
Other cause	94.1 (93.4 - 94.7)	91.9 (91.2 - 92.6)	84.6 (83.7 - 85.5)
All	94.3 (93.8 - 94.7)	91.9 (91.4 - 92.5)	83.8 (83.1 - 84.4)

Table A.5.18

One-, two- and five-year survival probabilities (cohort 1993-1997): First transplant patients (cadaver donor), adjusted from day of transplant to one, two and five years, adjusted for age, gender and primary diagnosis

	1 year Survival (95% CI)	2 year Survival (95% CI)	5 year Survival (95% CI)
ALL COUNTRIES			
0-19	96.7 (95.2 - 98.2)	95.8 (94.1 - 97.5)	93.6 (91.5 - 95.7)
20-44	97.2 (96.6 - 97.7)	95.8 (95.1 - 96.4)	91.4 (90.5 - 92.4)
45-64	92.8 (92.1 - 93.6)	89.9 (89.0 - 90.8)	79.1 (77.8 - 80.3)
65+	85.5 (82.3 - 88.7)	81.2 (77.7 - 84.8)	62.4 (58.1 - 67.0)
Male	95.3 (94.7 - 95.8)	93.2 (92.6 - 93.8)	85.4 (84.4 - 86.4)
Female	95.3 (94.6 - 96.0)	93.5 (92.7 - 94.3)	87.3 (86.2 - 88.4)
Diabetes	91.8 (90.1 - 93.4)	87.6 (85.6 - 89.6)	75.6 (73.0 - 78.3)
Hypertension / renal vascular disease	95.7 (94.5 - 96.9)	93.8 (92.3 - 95.3)	85.4 (83.2 - 87.7)
Glomerulonephritis	96.6 (95.9 - 97.3)	95.0 (94.2 - 95.8)	88.5 (87.3 - 89.7)
Other cause	95.0 (94.3 - 95.6)	93.1 (92.4 - 93.8)	86.5 (85.5 - 87.5)
All	95.3 (94.9 - 95.7)	93.3 (92.8 - 93.9)	86.2 (85.4 - 86.9)

Table A.5.19

One- and two-year survival probabilities (cohort 1996-2000): First transplant patients (cadaver donor), unadjusted
from day of transplant to one and two years, by age, gender and primary diagnosis

	1 year Survival (95% CI)	2 year Survival (95% CI)
ALL COUNTRIES		
0-19	98.0 (96.5 - 98.9)	96.7 (94.9 - 97.9)
20-44	97.4 (96.9 - 97.8)	96.2 (95.6 - 96.7)
45-64	94.9 (94.3 - 95.5)	92.4 (91.7 - 93.1)
65+	87.3 (84.9 - 89.4)	82.3 (79.7 - 84.6)
Male	95.3 (94.8 - 95.8)	93.1 (92.5 - 93.7)
Female	96.1 (95.4 - 96.6)	94.1 (93.4 - 94.8)
Diabetes	93.3 (91.8 - 94.4)	90.5 (88.9 - 91.9)
Hypertension / renal vascular disease	93.4 (91.6 - 94.8)	89.7 (87.6 - 91.4)
Glomerulonephritis	96.8 (96.1 - 97.4)	94.8 (94.0 - 95.6)
Other cause	95.9 (95.3 - 96.4)	94.1 (93.5 - 94.7)
All	95.6 (95.2 - 96.0)	93.5 (93.0 - 93.9)

Table A.5.20

One- and two-year survival probabilities (cohort 1996-2000): First transplant patients (cadaver donor), adjusted from day of transplant to one and two years, adjusted for age, gender and primary diagnosis

	1 year Survival (95% CI)	2 year Survival (95% CI)
ALL COUNTRIES		
0-19		
20-44	97.6 (97.1 - 98.0)	96.4 (95.9 - 97.0)
45-64	95.1 (94.5 - 95.7)	92.7 (92.0 - 93.5)
65+	87.8 (85.4 - 90.3)	83.2 (80.4 - 86.1)
Male	96.3 (95.9 - 96.8)	94.5 (94.0 - 95.1)
Female	96.7 (96.1 - 97.2)	95.1 (94.4 - 95.7)
Diabetes	93.7 (92.4 - 95.0)	91.2 (89.7 - 92.8)
Hypertension / renal vascular disease	95.7 (94.6 - 96.9)	93.4 (91.9 - 94.8)
Glomerulonephritis	97.2 (96.6 - 97.8)	95.5 (94.7 - 96.2)
Other cause	96.5 (96.0 - 97.0)	95.0 (94.4 - 95.6)
All	96.5 (96.1 - 96.8)	94.8 (94.3 - 95.2)

Table A.5.21

One-, two- and five-year survival probabilities (cohort 1993-1997): First transplant patients (living donor), unadjusted
from day of transplant to one, two and five years, by age, gender and primary diagnosis

	1 year Survival (95% CI)	2 year Survival (95% CI)	5 year Survival (95% CI)
ALL COUNTRIES			
0-19	98.7 (96.6 - 99.5)	98.0 (95.7 - 99.1)	97.4 (94.9 - 98.7)
20-44	98.8 (97.9 - 99.3)	97.7 (96.6 - 98.4)	94.0 (92.5 - 95.2)
45-64	95.1 (92.9 - 96.6)	94.7 (92.5 - 96.2)	88.5 (85.8 - 90.7)
65+	88.5 (78.0 - 94.1)	82.7 (72.1 - 89.5)	69.2 (59.6 - 77.0)
Male	97.6 (96.6 - 98.3)	97.0 (95.9 - 97.8)	93.0 (91.5 - 94.2)
Female	97.4 (96.1 - 98.3)	95.8 (94.2 - 97.0)	91.5 (89.4 - 93.2)
Diabetes	98.2 (94.5 - 99.4)	95.7 (91.5 - 97.9)	83.4 (78.0 - 87.6)
Hypertension / renal vascular disease	89.7 (83.2 - 93.8)	86.9 (80.2 - 91.5)	81.3 (74.4 - 86.5)
Glomerulonephritis	98.7 (97.5 - 99.3)	97.9 (96.5 - 98.7)	95.2 (93.4 - 96.5)
Other cause	97.5 (96.4 - 98.3)	96.8 (95.6 - 97.7)	93.2 (91.6 - 94.5)
All	97.5 (96.8 - 98.1)	96.5 (95.7 - 97.2)	92.4 (91.2 - 93.4)

Table A.5.22

One-, two- and five-year survival probabilities (cohort 1993-1997): First transplant patients (living donor), adjusted from day of transplant to one, two and five years, adjusted for age, gender and primary diagnosis

	1 year Survival (95% CI)	2 year Survival (95% CI)	5 year Survival (95% CI)
ALL COUNTRIES			
0-19			
20-44	98.8 (98.2 - 99.5)	97.7 (96.8 - 98.6)	94.1 (92.6 - 95.5)
45-64	95.2 (93.4 - 97.1)	94.8 (92.9 - 96.7)	88.8 (86.1 - 91.6)
65+			
Male	97.2 (96.2 - 98.2)	96.5 (95.4 - 97.7)	91.7 (90.0 - 93.5)
Female	96.9 (95.5 - 98.3)	94.8 (93.1 - 96.6)	89.3 (86.8 - 91.9)
Diabetes	97.9 (95.7 - 100.0)	95.2 (91.8 - 98.7)	81.2 (75.1 - 87.9)
Hypertension / renal vascular disease			
Glomerulonephritis	98.3 (97.3 - 99.4)	97.4 (96.1 - 98.8)	94.1 (92.1 - 96.1)
Other cause	96.7 (95.5 - 98.0)	95.8 (94.4 - 97.2)	91.0 (89.0 - 93.1)
All	97.1 (96.3 - 97.9)	95.9 (94.9 - 96.9)	90.8 (89.4 - 92.3)

Table A.5.23

One- and two-year survival probabilities (cohort 1996-2000): First transplant patients (living donor), unadjusted
from day of transplant to one and two years, by age, gender and primary diagnosis

	1 year Survival (95% CI)	2 year Survival (95% CI)
ALL COUNTRIES		
0-19	98.3 (96.4 - 99.2)	98.1 (96.1 - 99.1)
20-44	98.7 (97.9 - 99.2)	98.3 (97.5 - 98.9)
45-64	95.9 (94.2 - 97.1)	95.2 (93.4 - 96.5)
65+	93.9 (85.5 - 97.5)	92.4 (83.8 - 96.6)
Male	98.0 (97.3 - 98.6)	97.6 (96.7 - 98.2)
Female	97.1 (95.8 - 98.0)	96.5 (95.1 - 97.5)
Diabetes	97.4 (94.1 - 98.9)	96.9 (93.5 - 98.6)
Hypertension / renal vascular disease	90.4 (84.7 - 94.0)	89.6 (83.9 - 93.4)
Glomerulonephritis	99.0 (98.0 - 99.5)	98.4 (97.2 - 99.0)
Other cause	97.7 (96.8 - 98.4)	97.4 (96.4 - 98.1)
All	97.7 (97.1 - 98.2)	97.2 (96.5 - 97.8)

Table A.5.24

One- and two-year survival probabilities (cohort 1996-2000): First transplant patients (living donor), adjusted from day of transplant to one and two years, adjusted for age, gender and primary diagnosis

	1 year Survival (95% CI)	2 year Survival (95% CI)
ALL COUNTRIES		
0-19		
20-44	98.7 (98.1 - 99.3)	98.3 (97.7 - 99.0)
45-64	96.1 (94.7 - 97.5)	95.4 (93.9 - 97.0)
65+		
Male	97.8 (97.1 - 98.6)	97.3 (96.5 - 98.2)
Female	96.6 (95.3 - 97.9)	95.9 (94.5 - 97.4)
Diabetes		
Hypertension / renal vascular disease		
Glomerulonephritis		
Other cause	97.2 (96.3 - 98.2)	96.8 (95.7 - 97.8)
All	97.4 (96.7 - 98.1)	96.8 (96.1 - 97.6)

Table A.5.25

One-, two- and five-year survival probabilities (cohort 1993-1997): First graft (cadaver donor), unadjusted
from day of transplant to one, two and five years, by age, gender and primary diagnosis

	1 year Survival (95% CI)	2 year Survival (95% CI)	5 year Survival (95% CI)
ALL COUNTRIES			
0-19	83.4 (80.5-85.8)	79.4 (76.5-82.0)	67.8 (65.0-70.4)
20-44	88.0 (87.0-89.0)	84.9 (83.8-85.9)	74.8 (73.7-75.9)
45-64	84.4 (83.4-85.3)	81.0 (80.0-81.9)	69.0 (68.0-70.0)
65+	80.8 (77.7-83.5)	76.6 (73.5-79.4)	56.7 (54.1-59.2)
Male	85.5 (84.7-86.3)	82.1 (81.2-82.9)	69.9 (69.0-70.7)
Female	85.7 (84.7-86.7)	82.5 (81.4-83.6)	71.8 (70.6-72.9)
Diabetes	83.5 (81.5-85.3)	79.0 (77.0-80.9)	65.8 (63.8-67.7)
Hypertension / renal vascular disease	84.1 (81.6-86.3)	79.3 (76.8-81.6)	66.0 (63.6-68.3)
Glomerulonephritis	87.9 (86.7-89.0)	84.7 (83.5-85.9)	72.9 (71.6-74.1)
Other cause	85.0 (84.1-85.9)	82.0 (81.1-82.9)	71.2 (70.2-72.1)
All	85.6 (85.0-86.2)	82.2 (81.5-82.9)	70.6 (69.9-71.3)

Table A.5.26

One-, two- and five-year survival probabilities (cohort 1993-1997): First graft (cadaver donor), adjusted from day of transplant to one, two and five years, adjusted for age, gender and primary diagnosis

	1 year Survival (95% CI)	2 year Survival (95% CI)	5 year Survival (95% CI)
ALL COUNTRIES			
0-19	82.7 (79.5-86.0)	78.6 (75.1-82.2)	66.7 (62.7-70.9)
20-44	88.4 (87.3-89.4)	85.3 (84.1-86.5)	75.4 (74.0-76.9)
45-64	84.5 (83.4-85.6)	81.1 (79.9-82.3)	69.2 (67.8-70.7)
65+	81.1 (77.6-84.8)	77.0 (73.2-80.9)	57.3 (52.9-62.0)
Male	85.8 (84.9-86.8)	82.4 (81.4-83.4)	70.4 (69.1-71.6)
Female	85.8 (84.5-87.0)	82.5 (81.2-83.9)	71.8 (70.3-73.4)
Diabetes	83.4 (81.1-85.8)	78.9 (76.4-81.5)	65.6 (62.7-68.6)
Hypertension / renal vascular disease	85.4 (82.9-88.0)	81.0 (78.1-83.9)	68.4 (65.1-71.9)
Glomerulonephritis	88.0 (86.7-89.3)	84.8 (83.4-86.2)	72.9 (71.1-74.7)
Other cause	85.0 (84.0-86.1)	82.0 (80.9-83.2)	71.2 (69.8-72.5)
All	85.8 (85.1-86.6)	82.5 (81.7-83.3)	71.0 (70.0-72.0)

Table A.5.27

One- and two-year survival probabilities (cohort 1996-2000): First graft (cadaver donor), unadjusted
from day of transplant to one and two years, by age, gender and primary diagnosis

	1 year Survival (95% CI)	2 year Survival (95% CI)
ALL COUNTRIES		
0-19	88.8 (86.1-91.1)	85.1 (82.2-87.6)
20-44	90.5 (89.6-91.3)	88.2 (87.3-89.1)
45-64	88.9 (88.1-89.7)	85.4 (84.5-86.2)
65+	82.9 (80.3-85.2)	77.0 (74.4-79.4)
Male	89.2 (88.5-89.9)	85.8 (85.1-86.6)
Female	89.0 (88.0-89.8)	86.1 (85.1-87.0)
Diabetes	88.0 (86.3-89.5)	84.5 (82.7-86.1)
Hypertension / renal vascular disease	85.5 (83.2-87.4)	81.1 (78.8-83.2)
Glomerulonephritis	90.1 (89.0-91.1)	87.0 (85.8-88.1)
Other cause	89.5 (88.7-90.2)	86.5 (85.6-87.3)
All	89.1 (88.6-89.7)	85.9 (85.3-86.5)

Table A.5.28

One- and two-year survival probabilities (cohort 1996-2000): First graft (cadaver donor), adjusted
from day of transplant to one and two years, adjusted for age, gender and primary diagnosis

	1 year Survival (95% CI)	2 year Survival (95% CI)
ALL COUNTRIES		
0-19	88.3 (85.4-91.3)	84.4 (81.1-87.8)
20-44	90.7 (89.7-91.6)	88.4 (87.4-89.4)
45-64	89.0 (88.1-89.9)	85.6 (84.6-86.6)
65+	83.3 (80.4-86.2)	77.5 (74.4-80.8)
Male	89.6 (88.9-90.4)	86.4 (85.5-87.2)
Female	89.1 (88.0-90.1)	86.2 (85.1-87.3)
Diabetes	88.0 (86.2-89.8)	84.5 (82.5-86.5)
Hypertension / renal vascular disease	86.7 (84.5-89.1)	82.7 (80.2-85.3)
Glomerulonephritis	90.2 (89.0-91.3)	87.1 (85.8-88.4)
Other cause	89.6 (88.8-90.4)	86.6 (85.7-87.6)
All	89.4 (88.8-90.0)	86.3 (85.6-87.0)

Table A.5.29

One-, two- and five-year survival probabilities (cohort 1993-1997): First graft (living donor), unadjusted
from day of transplant to one, two and five years, by age, gender and primary diagnosis

	1 year Survival (95% CI)	2 year Survival (95% CI)	5 year Survival (95% CI)
ALL COUNTRIES			
0-19	93.0 (89.6-95.4)	91.6 (88.0-94.1)	82.3 (78.2-85.7)
20-44	93.3 (91.7-94.6)	90.4 (88.6-91.9)	82.6 (80.6-84.4)
45-64	90.3 (87.7-92.4)	89.3 (86.6-91.5)	82.1 (79.1-84.7)
65+	88.2 (77.6-94.0)	80.4 (69.8-87.6)	66.7 (57.2-74.5)
Male	93.0 (91.5-94.2)	90.7 (89.1-92.1)	82.4 (80.5-84.1)
Female	91.2 (89.1-93.0)	88.8 (86.5-90.7)	81.3 (78.8-83.5)
Diabetes	93.7 (89.0-96.4)	89.3 (84.1-92.9)	76.7 (71.2-81.3)
Hypertension / renal vascular disease	85.6 (78.6-90.4)	79.8 (72.8-85.2)	70.2 (63.5-75.9)
Glomerulonephritis	94.5 (92.6-95.9)	92.8 (90.6-94.4)	85.2 (82.6-87.4)
Other cause	91.4 (89.6-92.9)	89.4 (87.5-91.0)	82.0 (79.9-83.9)
All	92.3 (91.1-93.4)	90.0 (88.7-91.2)	82.0 (80.5-83.4)

Table A.5.30

One-, two- and five-year survival probabilities (cohort 1993-1997): First graft (living donor), adjusted
from day of transplant to one, two and five years, adjusted for age, gender and primary diagnosis

	1 year Survival (95% CI)	2 year Survival (95% CI)	5 year Survival (95% CI)
ALL COUNTRIES			
0-19	92.7 (89.6-95.9)	91.2 (87.8-94.7)	81.7 (77.0-86.5)
20-44	93.2 (91.7-94.8)	90.3 (88.5-92.1)	82.3 (80.0-84.7)
45-64	90.4 (87.9-93.0)	89.4 (86.8-92.2)	82.2 (78.9-85.6)
65+			
Male	92.4 (90.8-94.1)	90.0 (88.2-91.9)	81.0 (78.6-83.6)
Female	90.6 (88.3-92.9)	87.9 (85.4-90.5)	79.7 (76.6-83.0)
Diabetes	93.5 (89.7-97.5)	89.0 (84.2-94.0)	76.0 (69.6-83.1)
Hypertension / renal vascular disease	85.8 (79.5-92.7)	80.1 (72.9-88.1)	70.5 (62.3-79.8)
Glomerulonephritis	94.2 (92.4-96.1)	92.4 (90.3-94.6)	84.5 (81.6-87.5)
Other cause	90.6 (88.6-92.6)	88.4 (86.2-90.7)	80.3 (77.6-83.2)
All	91.7 (90.4-93.1)	89.2 (87.7-90.8)	80.6 (78.6-82.7)

Table A.5.31

One- and two-year survival probabilities (cohort 1996-2000): First graft (living donor), unadjusted
from day of transplant to one and two years, by age, gender and primary diagnosis

	1 year Survival (95% CI)	2 year Survival (95% CI)
ALL COUNTRIES		
0-19	95.2 (92.4-97.0)	93.6 (90.6-95.7)
20-44	94.5 (93.2-95.6)	92.9 (91.4-94.1)
45-64	92.4 (90.3-94.0)	91.1 (89.0-92.8)
65+	93.9 (85.5-97.5)	92.4 (83.8-96.6)
Male	95.0 (93.9-96.0)	93.7 (92.4-94.7)
Female	92.0 (90.2-93.6)	90.2 (88.2-91.9)
Diabetes	93.1 (88.9-95.8)	91.6 (87.1-94.5)
Hypertension / renal vascular disease	87.3 (81.4-91.4)	84.3 (78.3-88.8)
Glomerulonephritis	95.3 (93.6-96.5)	94.0 (92.2-95.5)
Other cause	94.0 (92.7-95.2)	92.5 (91.1-93.8)
All	94.0 (93.0-94.8)	92.5 (91.4-93.4)

Table A.5.32
One- and two-year survival probabilities (cohort 1996-2000): First graft (living donor), adjusted
from day of transplant to one and two years, adjusted for age, gender and primary diagnosis

	1 year Survival (95% CI)	2 year Survival (95% CI)
ALL COUNTRIES		
0-19	95.0 (92.6-97.5)	93.4 (90.6-96.2)
20-44	94.4 (93.2-95.7)	92.8 (91.3-94.3)
45-64	92.4 (90.5-94.4)	91.1 (89.0-93.3)
65+		
Male	94.8 (93.6-96.0)	93.4 (92.1-94.7)
Female	91.8 (89.9-93.8)	89.9 (87.8-92.1)
Diabetes	93.0 (89.4-96.8)	91.4 (87.5-95.5)
Hypertension / renal vascular disease		
Glomerulonephritis	95.0 (93.4-96.7)	93.7 (91.9-95.6)
Other cause	93.8 (92.4-95.3)	92.3 (90.7-93.9)
All	93.7 (92.7-94.8)	92.1 (90.9-93.3)

Figure A.5.1
**Adjusted survival (cohort 1993-1997):
 Incident dialysis patients and patients receiving
 a first transplant in the calendar year**
*from day 91, by modality,
 adjusted for age, gender and primary diagnosis*

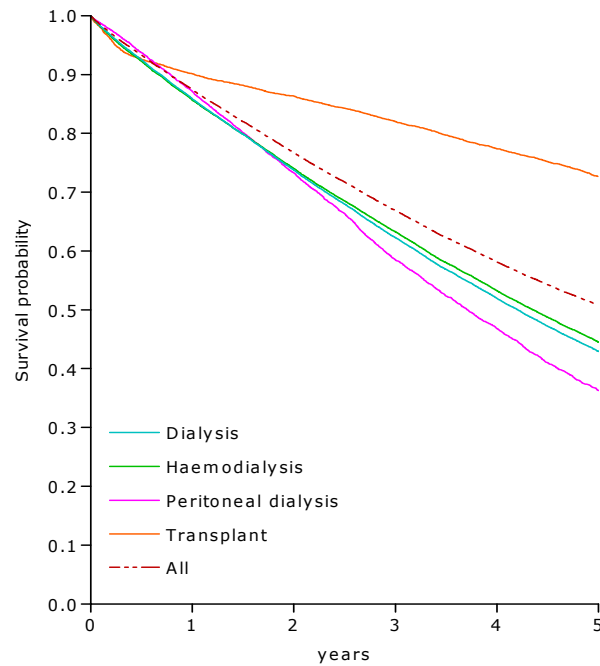


Figure A.5.2
**Adjusted survival (cohort 1993-1997):
 Incident haemodialysis patients**
*from day 91, by primary diagnosis,
 adjusted for age and gender*

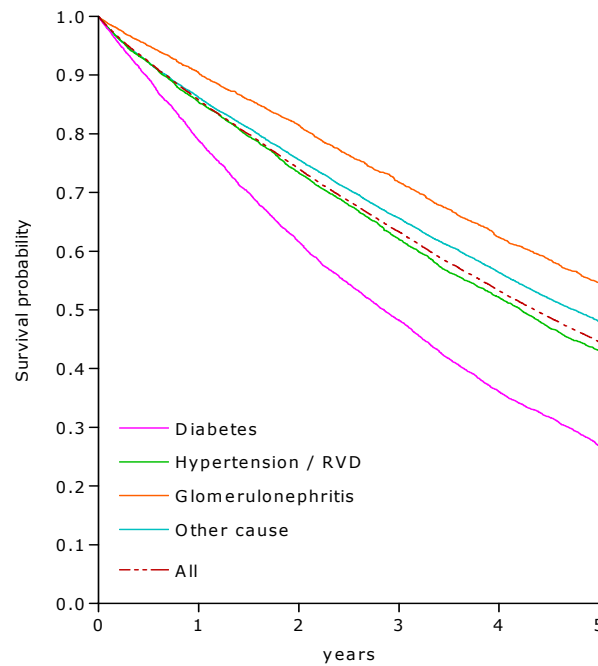
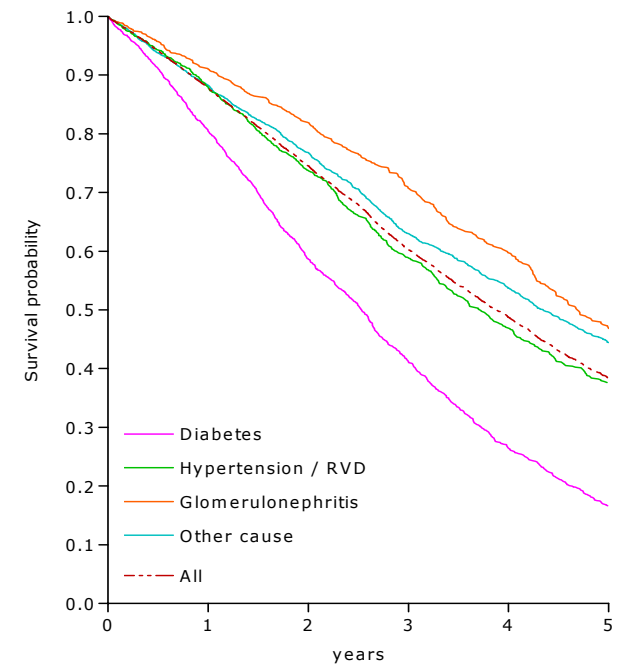


Figure A.5.3
**Adjusted survival (cohort 1993-1997):
 Incident peritoneal dialysis patients**
*from day 91, by primary diagnosis,
 adjusted for age and gender*



Abbreviation used: RVD: renal vascular disease

Table A.6.1

Expected remaining lifetimes (years) of the general population in 2000 in the participating European countries, & of prevalent dialysis and transplant patients in 2001 and 2002 (includes mortality in the first 90 days)

by age and gender

Age	General population in the participating European countries			Age	ESRD: Dialysis		ESRD: Transplant	
	All	Men	Women		Men	Women	Men	Women
0	78.2	75.5	80.8	0-19	33.8	32.4	56.6	58.1
5	73.7	71.0	76.2	20-24	17.5	16.6	37.9	39.6
10	68.7	66.0	71.3					
15	63.8	61.1	66.3	25-29	15.7	14.4	33.8	36.1
20	58.9	56.3	61.4	30-34	13.2	13.0	30.0	32.4
				35-39	11.0	11.6	26.0	28.8
25	54.1	51.5	56.5	40-44	9.2	9.8	22.4	25.1
30	49.2	46.8	51.6	45-49	7.6	8.5	19.3	21.1
35	44.4	42.0	46.7					
40	39.6	37.3	41.9	50-54	6.4	7.3	16.2	17.9
45	34.9	32.6	37.1	55-59	5.5	5.9	13.5	14.6
				60-64	4.9	4.9	11.2	11.5
50	30.4	28.1	32.5	65-69	4.2	4.2	9.0	8.9
55	26.0	23.8	27.9	70-74	3.7	3.8	7.2	6.8
60	21.7	19.7	23.5					
65	17.7	15.9	19.3	75-79	3.1	3.4		
70	14.1	12.5	15.3	80-84	2.5	2.5		
75	10.8	9.5	11.7					
80	8.0	7.1	8.5					
85	5.8	5.2	6.0					
90	4.0	3.8	4.2					
95	2.8	2.7	2.8					

IV Reference Tables - SECTION B

Table B.1.1
General population of the country/region and percent coverage of general population in 2002

	General population in thousands	% Coverage of general population by the registry
Bosnia-Herzegovina	3,828	100
Croatia	4,437	99.5
Czech Republic	10,200	100
Estonia	1,359	
France, Limousin	707	100
France, Lorraine	2,300	100
Germany	82,537	90
Latvia	2,339	100
Macedonia	2,023	100
Poland	38,638	
Portugal	10,408	100
Russia	145,182	
Serbia and Montenegro	8,110	90.4
Slovakia	5,379	96.5
Tunisia	9,782	100
Turkey	67,804	96.2

When cells are left empty, the data are unavailable

Table B.1.2
Renal centres: total number of centres and number collaborating

	Total number of renal centres	Number of renal centres collaborating with the registry
Bosnia-Herzegovina	23	23
Croatia	39	39
Czech Republic	86	85
Estonia	3	3
France, Limousin	9	9
France, Lorraine	13	13
Germany	1176	1056
Latvia	12	12
Macedonia	17	17
Poland	191	191
Portugal	107	107
Russia	274	241
Serbia and Montenegro	52	47
Slovakia	57	55
Tunisia	122	122
Turkey	398	383

The number of renal centres is based on having a separate centre code

Table B.2.1
Incident counts and incident rates per million population, unadjusted
at day 1

	All		Men		Women	
	N	Pmp	N	Pmp	N	Pmp
Bosnia-Herzegovina	420	109.7	231	123.6	189	96.4
Croatia	524	118.1	310	145.1	214	93.0
Czech Republic	1751	171.6				
Estonia						
France, Limousin	125	176.7	80	234.0	45	123.1
France, Lorraine	341	148.3	197	175.1	144	122.6
Germany	14358	174.0	8313	206.0	6045	143.3
Latvia	137	58.7	64	59.4	73	57.8
Macedonia	147	72.7	91	89.6	56	55.6
Poland	3832	99.1				
Portugal	2084	200.2				
Russia	2134	14.7	1176	17.4	958	12.3
Serbia and Montenegro	1113	137.2	629	159.6	484	116.1
Slovakia	748	139.0	429	164.4	319	115.2
Tunisia	1099	112.3	611	124.2	488	100.4
Turkey						

When cells are left empty, the data are unavailable

B2 INCIDENT PATIENTS ACCEPTED FOR RRT IN 2002 (residents only) AT DAY 1

Table B.2.2
Gender, mean and median age of incident patients
at day 1

	All				Men				Women			
	%	Mean (years)	SD	Median (years)	%	Mean (years)	SD	Median (years)	%	Mean (years)	SD	Median (years)
Bosnia-Herzegovina	100				55.0				45.0			
Croatia	100	59.7	13.8	62.0	59.2	57.8	14.6	60.5	40.8	62.4	12.2	64.0
Czech Republic												
Estonia												
France, Limousin	100	65		68	64.0	65		67	36.0	65		68
France, Lorraine	100	64.9	16.1	70.0	57.8	64.7	16.2	69.5	42.2	65.3	16.0	70.0
Germany	100	65	14.5	68	57.9	64	14.6	66	42.1	67	14.1	70
Latvia	100			54.3	46.7			63.7	53.3			53.8
Macedonia	100	55.6	13.8	56	61.9	53.7	13.6	55	38.1	58.6	13.5	59.5
Poland												
Portugal												
Russia	100	43.0	15.9	45	55.1	42.2	16.0	43	44.9	44.0	15.7	46
Serbia and Montenegro	100	53.2			56.5				43.5			
Slovakia	100	59.5		61	57.4	57.1		57	42.7	62.7		65
Tunisia	100	54.7		59.0	55.6	53.2		56.2	44.4	56.5		61.8
Turkey												

When cells are left empty, the data are unavailable

Table B.2.3
Incident rates per million population, adjusted
at day 1, adjusted for age and gender

	All	Men	Women
	Pmp	Pmp	Pmp
Bosnia-Herzegovina			
Croatia	100.1	120.9	80.8
Czech Republic			
Estonia			
France, Limousin	145	195	94
France, Lorraine	151.6	193.0	110.3
Germany	160	206	116
Latvia			
Macedonia	80.1	101.8	60.5
Poland			
Portugal			
Russia			
Serbia and Montenegro	118.5	137.8	100.2
Slovakia			
Tunisia	199.6	216.1	183.0
Turkey			

When cells are left empty, the data are unavailable

B2 INCIDENT PATIENTS ACCEPTED FOR RRT IN 2002 (residents only) AT DAY 1

Table B.2.4
Incident rates per million population and percentage, unadjusted
at day 1, by cause of renal failure

	Total		GN		PN		PKD		DM						HT		RVD		Misc		Unkn		Missing										
	Pmp	%	Pmp	%	Pmp	%	Pmp	%	Type I		Type II		Both		Pmp	%	Pmp	%	Pmp	%	Pmp	%	Pmp	%									
									Pmp	%	Pmp	%	Pmp	%																			
Bosnia-Herzegovina	109.7	100	15.4	14.0	16.7	15.2	5.1	5.0													16.2	14.8	10.0	8.8	29.5	26.9							
Croatia	118.1	100	18.5	15.7	13.8	11.7	8.9	7.5													34.0	28.8	13.2	11.2	5.4	4.6	14.5	12.3	7.3	6.2	2.4	2.0	
Czech Republic																																	
Estonia																																	
France, Limousin	176.7	100	31	17.5	8	4.5	6	3.4	6	3.4	34	19.2	40	22.6	38	21.5	0	0	21	11.9	33	18.6	0	0									
France, Lorraine	148.3	100	13.9	9.4	3.9	2.6	8.3	5.6	1.7	1.2	14.8	10.2	16.5	11.1	34.8	23.5	0.9	0.6	23.5	15.8	23.9	16.1	22.6	15.2									
Germany	174.0	100	25	14	10	6	6	4	8	4	55	32	63	36	19	11	12	7	24	14	16	9	0	0									
Latvia	58.7	100	16.7	28.4	11.3	18.8	5.2	8.6					12.4	21.2	2.6	4.3	0.4	0.7	1.7	2.9	8.6	14.6	0	0									
Macedonia	72.7	100	10.4	14.3	11.4	15.6	3.9	5.4	2.5	3.4	11.4	15.6	13.8	19.0	14.8	20.4	2.0	2.7	6.9	9.5	7.9	10.9	1.5	2.0									
Poland	99.1	100	18.9	19									23.9	24.1	12.7	10.2																	
Portugal																																	
Russia	14.7	100	7.9	53.4	2.1	14.3	1.4	9.4	1.1	7.2	0.3	1.9	1.3	9.1	0.8	5.2	0.1	0.9	0.2	1.5	0.1	0.9	0.8	5.5									
Serbia and Montenegro	137.2	100	25.6	18.7	16.3	11.9	8.6	6.3	11.2	8.2	13.4	9.8	24.7	18.0	27.5	20.0	1.4	1.0	18.9	13.7	14.3	10.4	0	0									
Slovakia	139.0	100	18.4	13	31.6	23	6.7	5	11.0	8	35.3	25	46.3	33	4.6	3	5.4	4	24.4	17	1.8	1	0	0									
Tunisia	112.3	100	13.7	12.2	11.9	10.6	1.8	1.6					22.9	20.4	15.7	14.0	1.8	1.6	11.1	9.9	33.4	29.7	0	0									
Turkey																																	

Abbreviations used: GN: glomerulonephritis/sclerosis; PN: pyelonephritis; PKD: polycystic kidneys, adult type; DM: diabetes mellitus; HT: hypertension; RVD: renal vascular disease; Misc: miscellaneous; Unkn: unknown
 When cells are left empty, the data are unavailable
 Categories may not add up to total or to 100% because of missing values

Table B.3.1
Incident counts and incident rates per million population, unadjusted
at day 90

	All		Men		Women	
	N	Pmp	N	Pmp	N	Pmp
Bosnia-Herzegovina	400	104.5	217	116.2	183	93.4
Croatia	489	110.2	276	129.2	213	92.5
Czech Republic						
Estonia	98	72.1	58	92.6	40	54.6
France, Limousin	119	168.2	76	222.2	43	117.7
France, Lorraine	291	126.5	166	147.6	125	106.4
Germany						
Latvia						
Macedonia	136	67.2	85	83.7	51	50.6
Poland						
Portugal						
Russia	2018	13.9	1104	16.3	914	11.8
Serbia and Montenegro	836	103.1	470	119.3	366	87.8
Slovakia	748	139.0	429	164.4	319	115.2
Tunisia	750	76.6	420	85.4	330	67.9
Turkey†	6482		3608		2874	

When cells are left empty, the data are unavailable

† Data based on 123 of the 383 centres

B3 INCIDENT PATIENTS ACCEPTED FOR RRT IN 2002 (residents only) AT DAY 90

Table B.3.2
Gender, mean and median age of incident patients
at day 90

	All				Men				Women			
	%	Mean (years)	SD	Median (years)	%	Mean (years)	SD	Median (years)	%	Mean (years)	SD	Median (years)
Bosnia-Herzegovina	100				54.3				45.7			
Croatia	100	58.1	15.6	63	56.4	57.4	14.5	60	43.6	59.8	13.8	61
Czech Republic												
Estonia	100			53.2	59.2			53.5	40.8			53.0
France, Limousin	100	64		67	63.6	64		67	36.4	64		68
France, Lorraine	100	63.3	16.5	68.0	57.0	63.0	16.7	68.0	43.0	63.7	16.3	68.0
Germany												
Latvia												
Macedonia	100	55.2	14.0	56	62.5	53.1	13.6	54	37.5	58.9	14.0	60
Poland												
Portugal												
Russia	100	42.9	15.6	45	54.7	42.0	15.8	43	45.3	44.0	15.3	46
Serbia and Montenegro	100	52.0			56.2				43.8			
Slovakia	100	59.5		61	57.4	57.1		57	42.7	62.7		65
Tunisia	100	53.5		57.5	56.0	51.7		53.8	44.0	55.7		60.0
Turkey†	100	49.7		51.7	56.0	49.1		50.7	44.0	50.5		52.9

When cells are left empty, the data are unavailable
 † Data based on 123 of the 383 centres

Table B.3.3
Incident rates per million population, adjusted
at day 90, adjusted for age and gender

	All	Men	Women
	Pmp	Pmp	Pmp
Bosnia-Herzegovina			
Croatia	105.2	129.4	82.6
Czech Republic			
Estonia			
France, Limousin	139	186	91
France, Lorraine	129.9	162.8	97.1
Germany			
Latvia			
Macedonia	75.5	94.2	54.9
Poland			
Portugal			
Russia			
Serbia and Montenegro	89.0	103.0	75.8
Slovakia			
Tunisia	132.9	143.8	121.9
Turkey			

When cells are left empty, the data are unavailable

B3 INCIDENT PATIENTS ACCEPTED FOR RRT IN 2002 (residents only) AT DAY 90

Table B.3.4
Incident rates per million population and percentage, unadjusted
at day 90, by cause of renal failure

	Total		GN		PN		PKD		DM						HT		RVD		Misc		Unkn		Missing	
	Pmp	%	Pmp	%	Pmp	%	Pmp	%	Type I		Type II		Both		Pmp	%	Pmp	%	Pmp	%	Pmp	%	Pmp	%
									Pmp	%	Pmp	%	Pmp	%										
Bosnia-Herzegovina	104.5	100	15.4	14.8	16.7	16.0	5.1	4.8					11.8	11.3	5.5	5.3			16.2	15.5	9.7	9.3	24.3	23.3
Croatia	110.2	100	18.5	16.8	14.8	13.5	8.6	7.8					28.4	25.8	13.7	12.5	4.1	3.7	12.6	11.5	6.8	6.1	2.7	2.5
Czech Republic																								
Estonia	72.1	100	18.4	26	16.2	22	5.9	8					13.2	19	11.8	16	3.7	5	2.9	4	0	0	0	0
France, Limousin	168.2	100	31	18.5	7	4.2	6	3.4	6	3.4	64	20.2	40	23.5	37	21.8	0	0	20	11.8	28	16.8	0	0
France, Lorraine	126.5	100	13.9	11.0	3.9	3.1	8.3	6.5	1.7	1.4	13.5	10.6	15.2	12.0	30.9	24.4	0.9	0.7	20.0	15.8	20.0	15.8	13.5	10.7
Germany																								
Latvia																								
Macedonia	67.2	100	7.9	11.8	10.9	16.2	3.9	5.9	2.5	3.7	9.9	14.7	12.4	18.4	14.3	21.3	2.0	2.9	6.9	10.3	7.9	11.8	1.0	1.5
Poland																								
Portugal																								
Russia	13.9	100	7.5	54.1	2.0	14.2	1.4	9.9	0.9	6.5	0.2	1.7	1.1	8.2	0.7	4.7	0.1	0.7	0.3	2.0	0.1	0.8	0.8	5.6
Serbia and Montenegro	103.1	100	9.8	9.6	13.6	13.1	8.0	7.8	9.1	8.8	11.7	11.4	20.8	20.2	23.6	22.8	1.4	1.3	16.0	15.6	9.9	9.6	0	0
Slovakia	139.0	100	18.4	13	31.5	23	6.7	5	11.0	8	34.9	25	45.9	33	4.6	3	5.4	4	24.7	18	1.9	1	0	0
Tunisia	76.6	100	9.6	12.6	7.5	9.7	1.6	2.1					14.8	19.4	12.0	15.6	1.5	2.0	6.5	8.5	23.1	30.1	0	0
Turkey†		100		12.7				3.1						14.7		12.4			11.5		19.1		26.5	

Abbreviations used: GN: glomerulonephritis/sclerosis; PN: pyelonephritis; PKD: polycystic kidneys, adult type; DM: diabetes mellitus; HT: hypertension; RVD: renal vascular disease; Misc: miscellaneous; Unkn: unknown
 When cells are left empty, the data are unavailable
 Categories may not add up to total or to 100% because of missing values
 † Data based on 123 of the 383 centres

B3 INCIDENT PATIENTS ACCEPTED FOR RRT IN 2002 (residents only) AT DAY 90

Table B.3.5
Incident counts
at day 90, by established therapy

	Total	Haemodialysis					Peritoneal dialysis				Transplant			Missing		
		Hospital/ centre	Home	HD, type unkn	HF	HDF	Total HD/ HF/HDF	APD	CAPD	PD, type unkn	Total PD	Living	Cadaver		Tx, type unkn	Total Tx
	N	N	N	N	N	N	N	N	N	N	N	N	N	N	N	N
Bosnia-Herzegovina																
Croatia	489	433	0	0	0	0	433	1	54	0	55	0	1	0	1	0
Czech Republic																
Estonia	98	52	0	0			52	2	33	0	35	0	11	0	11	0
France, Limousin	119	98	0	0	1	1	100	5	13	0	18	0	1	0	1	0
France, Lorraine	291	215	0	0	0	1	216	12	54	0	66	0	0	9	9	0
Germany																
Latvia																
Macedonia	136	136	0	0	0	0	136	0	0	0	0	0	0	0	0	0
Poland																
Portugal																
Russia	2018	1882	0	0	0	0	1882	0	136	0	136	0	0	0	0	0
Serbia and Montenegro	836	594	5	0	0	26	625	5	140	27	171	39	0	1	40	0
Slovakia	748	703	0	0	0	1	704	6	36	0	42	0	2	0	2	0
Tunisia	750	713	0	0	0	0	713	9	28	0	37	0	0	0	0	0
Turkey																

Abbreviations used: HD: haemodialysis; Unkn: unknown; HF: haemofiltration; HDF: haemodiafiltration; APD: automated peritoneal dialysis; CAPD: continuous ambulatory peritoneal dialysis; PD: peritoneal dialysis; Tx: transplant
When cells are left empty, the data are unavailable
Categories may not add up to total or to 100% because of missing values

B3 INCIDENT PATIENTS ACCEPTED FOR RRT IN 2002 (residents only) AT DAY 90

Table B.3.6
Incident rates per million population, unadjusted
at day 90, by established therapy

	Total	Haemodialysis					Peritoneal dialysis				Transplant			Missing		
		Hospital/ centre	Home	HD, type unkn	HF	HDF	Total HD/ HF/HDF	APD	CAPD	PD, type unkn	Total PD	Living	Cadaver		Tx, type unkn	Total Tx
Bosnia-Herzegovina																
Croatia	110.2	97.6	0	0	0	0	97.6	0.2	12.2	0	12.5	0	0.2	0	0.2	0
Czech Republic																
Estonia	72.1	38.3	0	0			38.3	1.5	24.3	0	25.8	0	8.1	0	8.1	0
France, Limousin	168.2	138.5	0	0	1.4	1.4	141.4	7.1	18.4	0	25.4	0	1.4	0	1.4	0
France, Lorraine	126.5	93.5	0	0	0	0.4	93.9	5.2	23.5	0	28.7	0	0	3.9	3.9	0
Germany																
Latvia																
Macedonia	67.2	67.2	0	0	0	0	67.2	0	0	0	0	0	0	0	0	0
Poland																
Portugal																
Russia	13.9	13.0	0	0	0	0	13.0	0	0.9	0	0.9	0	0	0	0	0
Serbia and Montenegro	103.1	73.2	0.6	0	0	3.2	77.1	0.6	17.3	3.3	21.1	4.8	0	0.1	4.9	0
Slovakia	139.0	130.7	0	0	0	0.2	130.8	1.1	6.7	0	7.8	0	0.4	0	0.4	0
Tunisia	76.6	72.9	0	0	0	0	72.9	0.9	2.8	0	3.7	0	0	0	0	0
Turkey																

Abbreviations used: HD: haemodialysis; Unkn: unknown; HF: haemofiltration; HDF: haemodiafiltration; APD: automated peritoneal dialysis; CAPD: continuous ambulatory peritoneal dialysis; PD: peritoneal dialysis; Tx: transplant
 When cells are left empty, the data are unavailable
 Categories may not add up to total or to 100% because of missing values

B3 INCIDENT PATIENTS ACCEPTED FOR RRT IN 2002 (residents only) AT DAY 90

Table B.3.7
Percentage of established therapy, unadjusted
at day 90

	Total	Haemodialysis					Peritoneal dialysis				Transplant			Missing		
		Hospital/ centre	Home	HD, type unkn	HF	HDF	Total HD/ HF/HDF	APD	CAPD	PD, type unkn	Total PD	Living	Cadaver		Tx, type unkn	Total Tx
	%	%	%	%	%	%	%	%	%	%	%	%	%	%	%	%
Bosnia-Herzegovina																
Croatia	100	88.5	0	0	0	0	88.5	0.2	11.0	0	11.2	0	0.2	0	0.2	0
Czech Republic																
Estonia	100	53.2	0	0			53.2	2.0	33.6	0	35.6	0	11.2	0	11.2	0
France, Limousin	100	82.4	0	0	0.8	0.8	84.0	4.2	10.9	0	15.1	0	0.8	0	0.8	0
France, Lorraine	100	73.9	0	0	0	0.3	74.2	4.1	18.6	0	22.7	0	0	3.1	3.1	0
Germany																
Latvia																
Macedonia	100	100	0	0	0	0	100	0	0	0	0	0	0	0	0	0
Poland																
Portugal																
Russia	100	93.3	0	0	0	0	93.3	0	6.7	0	6.7	0	0	0	0	0
Serbia and Montenegro	100	71.0	0.6	0	0	3.1	74.7	0.6	16.7	3.2	20.5	4.7	0	0.1	4.8	0
Slovakia	100	94.0	0	0	0	0.1	94.1	0.8	4.8	0	5.6	0	0.3	0	0.3	0
Tunisia	100	95.1	0	0	0	0	95.1	1.2	3.7	0	4.9	0	0	0	0	0
Turkey																

Abbreviations used: HD: haemodialysis; Unkn: unknown; HF: haemofiltration; HDF: haemodiafiltration; APD: automated peritoneal dialysis; CAPD: continuous ambulatory peritoneal dialysis; PD: peritoneal dialysis; Tx: transplant
 When cells are left empty, the data are unavailable
 Categories may not add up to total or to 100% because of missing values

Table B.4.1
Prevalent counts and per million population, unadjusted
prevalent patients on December 31

	All		Men		Women	
	N	Pmp	N	Pmp	N	Pmp
Bosnia-Herzegovina	1531	399.9	853	456.6	678	345.9
Croatia	3100	698.7	1779	832.9	1321	573.8
Czech Republic	7092	695.3				
Estonia	371	273.1	211	336.9	160	218.5
France, Limousin	573	810.1	341	997.4	232	634.8
France, Lorraine	1891	822.3	1115	991.2	776	660.6
Germany	75777	918.1	43172	1070.1	32605	772.8
Latvia	621	265.5	300	278.7	321	254.4
Macedonia	1056	522.1	625	615.5	431	427.9
Poland	15619	404.6				
Portugal	11419	1097.2				
Russia	11517	79.3	6250	92.5	5267	67.9
Serbia and Montenegro	3997	492.8	2281	578.9	1716	411.5
Slovakia†	2625	487.9	1484	568.6	1141	411.9
Tunisia	5270	538.7	2922	593.9	2348	483.0
Turkey‡	8116		4432		3684	

When cells are left empty, the data are unavailable

† Data include dialysis patients only

‡ Data based on 123 of the 383 centres

Table B.4.2
Gender, mean and median age
prevalent patients on December 31

	All				Men				Women			
	%	Mean (years)	SD	Median (years)	%	Mean (years)	SD	Median (years)	%	Mean (years)	SD	Median (years)
Bosnia-Herzegovina	100	53.7	13.9	55	55.7	53.3	13.7	54	44.3	54.0	14.1	56
Croatia	100	55.9	14.8	57.0	57.4	54.8		56.0	42.6	57.5		59.0
Czech Republic												
Estonia	100			52.1	56.9			51.4	43.1			52.7
France, Limousin	100	59		60	59.5	59		59	40.5	60		62
France, Lorraine	100	47.9	17.6	48	59.0	48.5	17.2	50	41.0	46.7	18.1	48
Germany	100	61	15.9	63	57.0	59	15.5	62	43.0	62	16.2	65
Latvia	100			49.8	48.3			48.2	51.7			51.3
Macedonia	100	51.3	13.7	51	59.2	50.5	13.4	50	40.8	52.4	14.0	53
Poland												
Portugal												
Russia	100	44.6	13.8	46	54.3	44.4	13.8	45	45.7	45.0	13.8	46
Serbia and Montenegro	100	42.8			57.1				42.9			
Slovakia†	100	56.1		57.5	56.5	55.3		54.5	43.5	56.8		59.5
Tunisia	100	52.0		53.3	55.4	50.9		52.0	44.6	53.4		55.8
Turkey‡	100	46.9		49.0	55.3	46.6		48.4	44.7	47.2		49.6

When cells are left empty, the data are unavailable

† Data include dialysis patients only

‡ Data based on 123 of the 383 centres

Table B.4.3
Prevalence per million population, adjusted
prevalent patients on December 31, adjusted for age and gender

	All	Men	Women
	Pmp	Pmp	Pmp
Bosnia-Herzegovina	455.7	466.6	444.7
Croatia	667.3	859.8	517.7
Czech Republic			
Estonia			
France, Limousin	700	876	536
France, Lorraine	815.0	1002.5	627.5
Germany	844	1045	653
Latvia			
Macedonia	559.2	670.4	448.0
Poland			
Portugal			
Russia			
Serbia and Montenegro	547.1	642.6	456.8
Slovakia†			
Tunisia	906.6	981.7	831.5
Turkey			

When cells are left empty, the data are unavailable

† Data include dialysis patients only

B4 PREVALENT PATIENTS ON RRT IN 2002 (residents only)

Table B.4.4
Prevalence per million population and percentage, unadjusted
prevalent patients on December 31, by cause of renal failure

	Total		GN		PN		PKD		DM						HT		RVD		Misc		Unkn		Missing	
	Pmp	%	Pmp	%	Pmp	%	Pmp	%	Type I		Type II		Both		Pmp	%	Pmp	%	Pmp	%	Pmp	%	Pmp	%
									Pmp	%	Pmp	%	Pmp	%										
Bosnia-Herzegovina	399.9	100	101.1	25.3	78.9	19.7	26.9	6.7					34.5	8.6	22.5	5.6			79.1	19.8	49.1	12.3	7.8	2.0
Croatia	698.7	100	191.0	27.3	117.3	16.8	66.2	9.5					103.0	14.7	53.2	7.6	12.2	1.7	100.0	14.3	51.0	7.3	7.0	0.8
Czech Republic																								
Estonia	273.1	100	92	34	50	18	26	9.5					50	18	28	10	12	4.3	12.5	5	2.9	1.1	0	0
France, Limousin	810.1	100	213	26.6	64	7.9	98	12.1	23	2.8	59	7.2	82	10.0	72	8.8	7	0.9	112	13.6	157	19.5	6	0.7
France, Lorraine	822.3	100	61.7	7.5	24.8	3.0	25.2	3.1	9.6	1.2	50.4	6.1	60.0	7.3	89.6	10.9	3.0	0.4	81.3	9.9	75.7	9.3	400.9	48.8
Germany	918.1	100	222	24	96	10	55	6	46	5	159	17	205	22	62	7	36	4	149	16	95	10	0	0
Latvia																								
Macedonia	522.1	100	141.4	27.1	80.1	15.3	49.4	9.5	7.4	1.4	37.1	7.1	44.5	8.6	48.4	9.3	9.9	1.9	52.9	10.1	72.7	13.9	22.7	4.3
Poland†	268.2	100	70.7	26.4	44.3	16.5	23.8	8.9					51.6	19.2	24.0	8.9	0.9	0.3	20.8	7.8	24.5	9.1	7.6	2.8
Portugal																								
Russia	79.3	100	44.5	56.1	9.3	11.8	7.4	9.3	3.3	4.2	0.7	0.8	3.9	5.0	1.9	2.3	0.4	0.5	4.9	6.1	1.3	1.7	5.8	7.3
Serbia and Montenegro	492.8	100	142.5	28.9	70.6	14.3	45.2	9.2	36.4	7.4	28.4	5.8	64.7	13.2	76.5	15.5	8.3	1.7	47.8	9.7	37.1	7.5	0	0
Slovakia†	487.9	100	99	20	130	27	32	7	25	5	86	18	111	23	22	4	16	3	69	14	9	2	0	0
Tunisia	538.7	100	80.6	14.9	66.0	12.3	11.2	2.1					74.6	13.8	91.9	17.1	12.1	2.2	61.2	11.4	141.1	26.2	0	0
Turkey‡		100		20.2				4.6						15.8		17.4			18.1		23.9		0	

Abbreviations used: GN: glomerulonephritis/sclerosis; PN: pyelonephritis; PKD: polycystic kidneys, adult type; DM: diabetes mellitus; HT: hypertension; RVD: renal vascular disease; Misc: miscellaneous; Unkn: unknown
 When cells are left empty, the data are unavailable
 Categories may not add up to total or to 100% because of missing values
 † Data include dialysis patients only
 ‡ Data based on 123 of the 383 centres

B4 PREVALENT PATIENTS ON RRT IN 2002 (residents only)

Table B.4.5
Prevalence counts

prevalent patients on December 31, by established therapy

	Total	Haemodialysis					Peritoneal dialysis				Transplant			Missing		
		Hospital/ centre	Home	HD, type unkn	HF	HDF	Total HD/ HF/HDF	APD	CAPD	PD, type unkn	Total PD	Living	Cadaver		Tx, type unkn	Total Tx
Bosnia-Herzegovina	1531	1338	0	0	0	0	1338	0	44	0	44	127	22	0	149	0
Croatia	3100	2348	5	0	0	6	2359	5	213	0	218	87	434	2	523	0
Czech Republic	7092	3788	2	0	24	244	4058				313				2721	0
Estonia	371	99	0	0			99	9	49	0	58	34	180	0	214	0
France, Limousin	573	282	6	0	7	0	295	9	27	0	36	1	227	14	242	0
France, Lorraine	1891	856	15	0	1	7	879	20	152	0	172	23	790	27	840	0
Germany†	75777	52776	456	952	500	5527	54184	699	1998	0	2697				18896	0
Latvia	621	261	0	0			261				69	0	291	0	291	0
Macedonia	1056	973	0	0	0	0	973	0	5	0	5	73	4	1	78	0
Poland	15619	9290	0	0			9290	510	554	0	1064	165	5100	0	5265	0
Portugal	11419	7370	0	0			7370	228	146	2	376				3673	0
Russia	11517	8233	0	0	0	0	8233	0	569	0	569	82	2633	0	2715	0
Serbia and Montenegro	3997	3049	65	0	0	131	3245	10	232	38	280	374	98	0	472	0
Slovakia‡	2625	2439	0	0	0	24	2463	57	105	0	162					
Tunisia	5270	5119	0	0	0	0	5119	26	90	0	116	13	22	0	35	0
Turkey	26199						20600	473	2556	0	3029	1950	620	0	2570	0

Abbreviations used: HD: haemodialysis; Unkn: unknown; HF: haemofiltration; HDF: haemodiafiltration; APD: automated peritoneal dialysis; CAPD: continuous ambulatory peritoneal dialysis; PD: peritoneal dialysis; Tx: transplant

When cells are left empty, the data are unavailable

Categories may not add up to total or to 100% because of missing values

† HF and HDF are also included in the categories hospital/centre HD, home HD, and HD, type unkn

‡ Data include dialysis patients only

B4 PREVALENT PATIENTS ON RRT IN 2002 (residents only)

Table B.4.6
Prevalence per million population, unadjusted
prevalent patients on December 31, by established therapy

	Total	Haemodialysis					Peritoneal dialysis				Transplant			Missing		
		Hospital/ centre	Home	HD, type unkn	HF	HDF	Total HD/ HF/HDF	APD	CAPD	PD, type unkn	Total PD	Living	Cadaver		Tx, type unkn	Total Tx
Bosnia-Herzegovina	399.9	349.5	0	0	0	0	349.5	0	11.5	0	11.5	33.2	5.8	0	38.9	0
Croatia	698.7	529.2	1.1	0	0	1.4	531.7	1.1	48.0	0	49.1	19.6	97.8	0.5	117.9	0
Czech Republic	695.3	371.4	0.2	0	2.4	23.9	397.8				30.7				266.8	0
Estonia	273.1	72.9	0	0			72.9	6.6	36.1	0	42.7	25.0	132.5	0	157.5	0
France, Limousin	810.1	398.7	8.5	0	9.9	0	417.1	12.7	38.2	0	50.9	1.4	320.9	19.8	342.1	0
France, Lorraine	822.3	372.2	6.5	0	0.4	3.0	382.1	8.7	66.1	0	74.8	10.0	343.5	11.7	365.3	0
Germany	918.1	639.4	5.5	11.5			656.5	8.5	24.2	0	32.7				228.9	0
Latvia	265.5	111.6	0	0			111.6				29.5	0	124.4	0	124.4	0
Macedonia	522.1	481.1	0	0	0	0	481.1	0	2.5	0	2.5	36.1	2.0	0.5	38.6	0
Poland	404.6	240.6	0	0			240.6	13.2	14.3	0	27.6	4.3	132.1	0	136.4	0
Portugal	1097.2	708.1	0	0			708.1	21.9	14.0	0.2	36.1				352.9	0
Russia	79.3	56.7	0	0	0	0	56.7	0	3.9	0	3.9	0.6	18.1	0	18.7	0
Serbia and Montenegro	492.8	376.0	8.0	0	0	16.1	400.1	1.2	28.6	4.7	34.5	46.1	12.1	0	58.2	0
Slovakia†	487.9	453.4	0	0	0	4.5	457.9	10.6	19.5	0	30.1					
Tunisia	538.7	523.3	0	0	0	0	523.3	2.6	9.2	0	11.8	1.4	2.2	0	3.6	0
Turkey	386.4						303.8	7.0	37.7	0	44.7	28.8	9.1	0	37.9	0

Abbreviations used: HD: haemodialysis; Unkn: unknown; HF: haemofiltration; HDF: haemodiafiltration; APD: automated peritoneal dialysis; CAPD: continuous ambulatory peritoneal dialysis; PD: peritoneal dialysis; Tx: transplant
 When cells are left empty, the data are unavailable
 Categories may not add up to total or to 100% because of missing values
 † Data include dialysis patients only

B4 PREVALENT PATIENTS ON RRT IN 2002 (residents only)

Table B.4.7
Percentage of established therapy, unadjusted
prevalent patients on December 31

	Total	Haemodialysis					Peritoneal dialysis				Transplant			Missing		
		Hospital/ centre	Home	HD, type unkn	HF	HDF	Total HD/ HF/HDF	APD	CAPD	PD, type unkn	Total PD	Living	Cadaver		Tx, type unkn	Total Tx
	%	%	%	%	%	%	%	%	%	%	%	%	%	%	%	%
Bosnia-Herzegovina	100	87.4	0	0	0	0	87.4	0	2.9	0	2.9	8.3	1.4	0	9.7	0
Croatia	100	75.7	0.2	0	0	0.2	76.1	0.2	6.9	0	7.0	2.8	14.0	0.1	16.9	0
Czech Republic	100	53.4	0	0	0.3	3.4	57.2				4.4				38.4	0
Estonia	100	26.7	0	0			26.7	2.4	13.2	0	15.6	9.2	48.5	0	57.7	0
France, Limousin	100	49.2	1.1	0	1.2	0	51.5	1.6	4.7	0	6.3	0.2	39.6	2.4	42.2	0
France, Lorraine	100	45.3	0.8	0	0.1	0.4	46.6	1.1	8.0	0	9.0	1.2	41.8	1.4	44.4	0
Germany	100	69.6	0.6	1.3			71.5	0.9	2.6	0	3.6				24.9	0
Latvia	100	42.0	0	0			42.0				11.1	0	46.9	0	46.9	0
Macedonia	100	92.1	0	0	0	0	92.1	0	0.5	0	0.5	6.9	0.4	0.1	7.4	0
Poland	100	59.5	0	0			59.5	3.3	3.5	0	6.9				33.6	0
Portugal	100	64.5	0	0			64.5	2.0	1.3	0	3.3				32.2	0
Russia	100	71.5	0	0	0	0	71.5	0	4.9	0	4.9	0.7	22.9	0	23.6	0
Serbia and Montenegro	100	76.3	1.6	0	0	3.2	81.1	0.2	5.8	0.9	7.0	9.4	2.5	0	11.9	0
Slovakia†	100	92.9	0	0	0	0.9	93.8	2.2	4.0	0	6.2					
Tunisia	100	97.1	0	0	0	0	97.1	0.5	1.7	0	2.2	0.3	0.4	0	0.7	0
Turkey	100						78.6	1.8	9.7	0	11.5	7.4	2.4	0	9.8	0

Abbreviations used: HD: haemodialysis; Unkn: unknown; HF: haemofiltration; HDF: haemodiafiltration; APD: automated peritoneal dialysis; CAPD: continuous ambulatory peritoneal dialysis; PD: peritoneal dialysis; Tx: transplant
 When cells are left empty, the data are unavailable
 Categories may not add up to total or to 100% because of missing values
 † Data include dialysis patients only

Table B.4.8
Renal transplants performed in 2002, number and percentage
by donor type

	Total		Living								Cadaver		Donor type unkn	
	N	%	Related		Unrelated		Type unkn		All		N	%	N	%
			N	%	N	%	N	%	N	%				
Bosnia-Herzegovina	149	100	96	64.4	27	18.1	4	2.7	127	85.2	22	14.8	0	0
Croatia	86	100	5	5.8	0	0	0	0	5	5.8	80	93.0	1	1.2
Czech Republic	326	100	40	12.3	15	4.6	0	0	55	16.9	271	83.1	0	0
Estonia	50	100	0	0	0	0	0	0	0	0	50	100	0	0
France, Limousin	32	100	0	0	0	0	0	0	0	0	32	100	0	0
France, Lorraine	174	100	6	3.4	0	0	0	0	6	3.4	147	84.5	21	12.1
Germany	2325	100							443	19.1	1882	80.9	0	0
Latvia	65	100	0	0	0	0	0	0	0	0	65	100	0	0
Macedonia	16	100	15	93.7	1	6.3	0	0	16	100	0	0	0	0
Poland	935	100	25	2.7	0	0	0	0	25	2.7	910	97.3	0	0
Portugal	395	100	23	5.8	0	0	0	0	23	5.8	372	94.2	0	0
Russia	409	100	20	4.9	0	0	0	0	20	4.9	389	95.1	0	0
Serbia and Montenegro	40	100	39	97.5	0	0	0	0	39	97.5	0	0	1	2.5
Slovakia	73	100	0	0	0	0	15	20.5	15	20.5	58	79.5	0	0
Tunisia	35	100	13	37.1	0	0	0	0	13	37.1	22	62.9	0	0
Turkey	549	100							351	63.9	198	36.1	0	0

*When cells are left empty, the data are unavailable
Categories may not add up to total or to 100% because of missing values*